

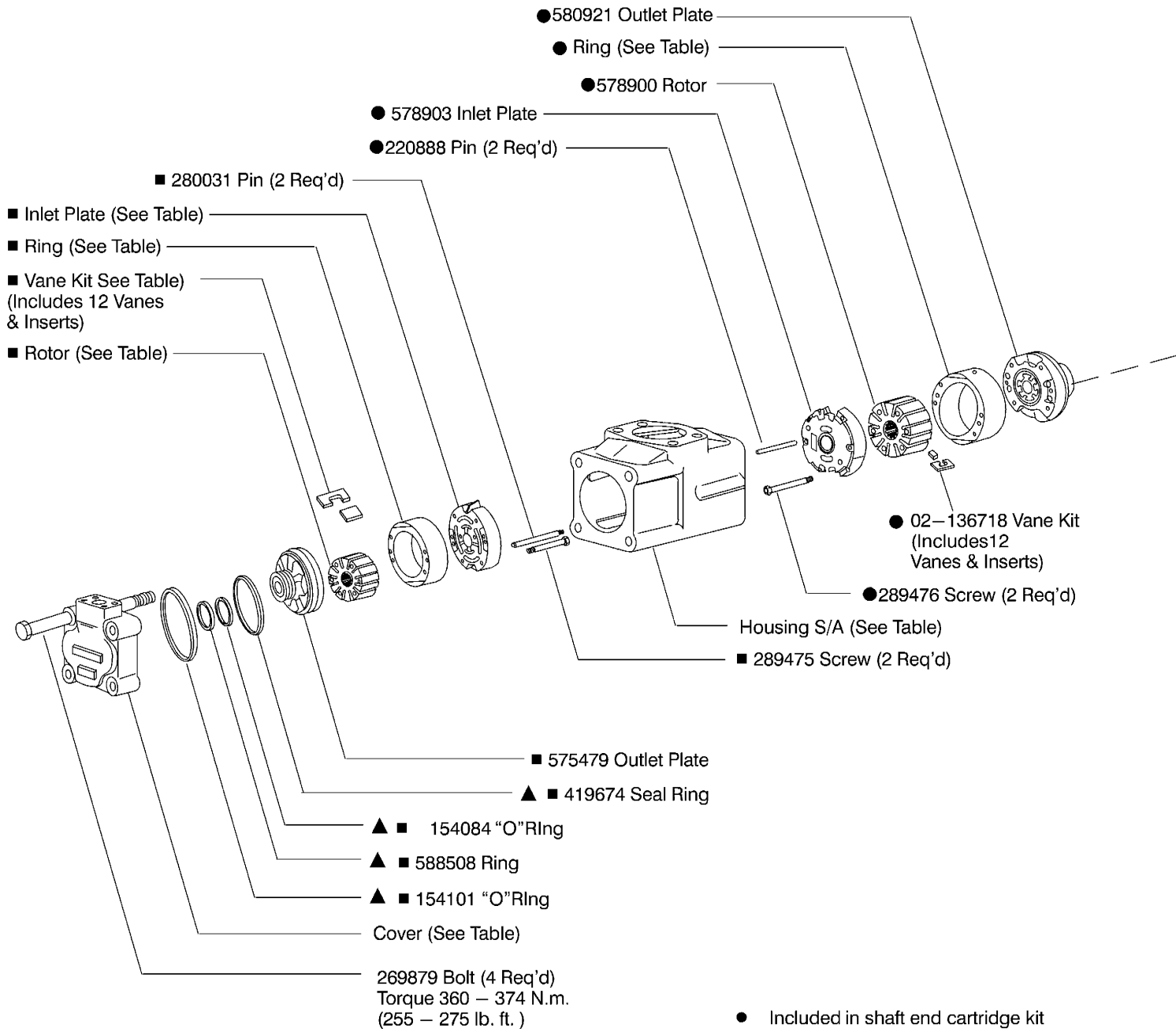
**EATON**

**Vickers**

**Vane Type Double Pump**

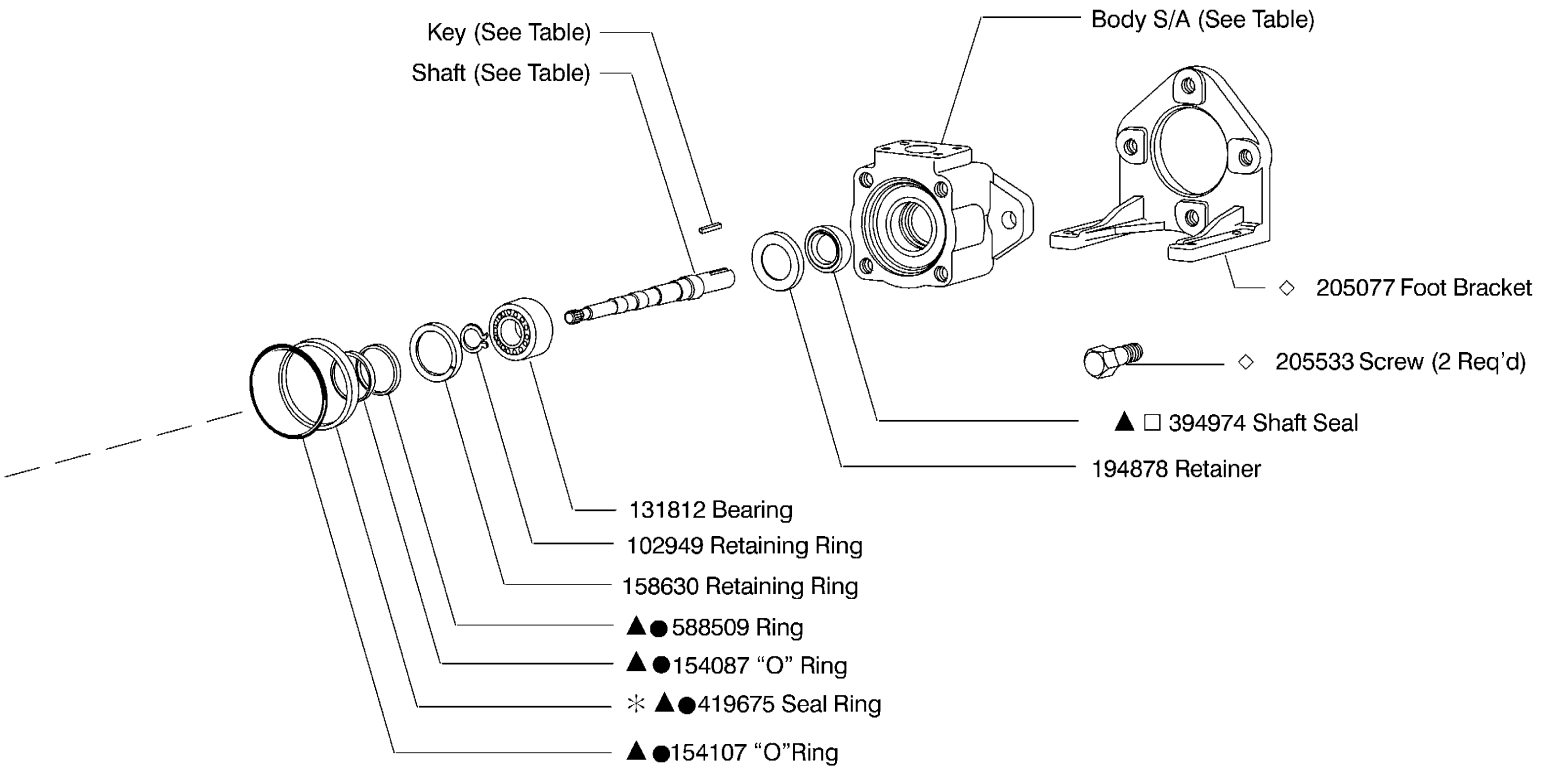
(F3)-4535V(M)-\*\*A(M)\*\*(F)-\*\*-22-\*

MODEL	■ ROTOR	■ VANE KIT	■ RING	■ INLET PLATE	Cover End ■ CART. KIT	Cover End ■ F3 CART. KIT
4535V***25	575478	02-136717	576210	575480	02-102556	02-102564
4535V***30			576212		02-102557	02-102565
4535V***35			576214		02-102558	02-102566
4535V***38			575476		02-102559	02-102567



- Included in shaft end cartridge kit
- Included in cover end cartridge kit
- ▲ Included in seal kit 922866  
F3 equivalent seal kit 919346
- ◇ Included in foot bracket kit FB-C-10
- Assemble seal with spring loaded sealing member towards bearing. Seals to be completely wetted with oil prior to assembly.
- \* Install 419675 sealing ring into body, then install cartridge kit.

MODEL	● RING	Shaft End	
		● CART KIT	● F3 CART KIT
4535V42	581679	02-102572	02-102576
4535V50	581680	02-102574	02-102577
4535V60	578904	02-102575	02-102578

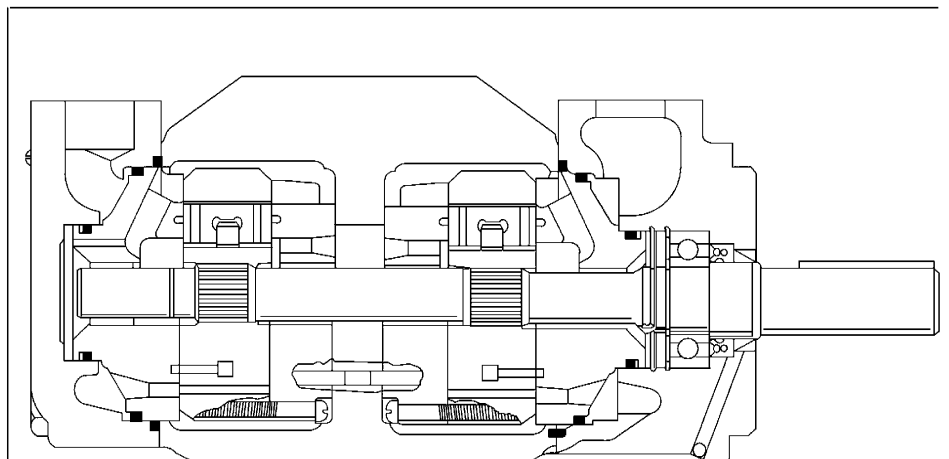


MODEL	COVER	HOUSING S/A	BODY S/A
4535V**A	270679	379585	942356
4535VM**A	270679		02-136925
4535VM**AM	478512	875811	02-136926

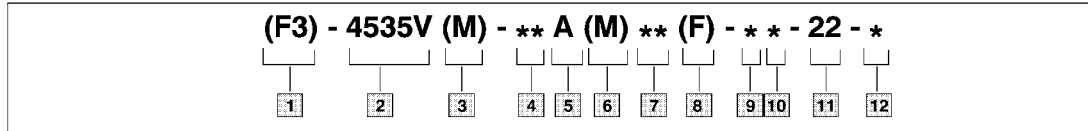
SHAFT	TYPE	KEY
289083	(1) keyed	217596
289084	(1) splined	—
361763	(86) keyed	239751
850615	(192N) keyed	472303

**NOTE**

For satisfactory service life of these components in industrial applications, use full flow filtration to provide fluid which meets ISO cleanliness code 16/13 or cleaner. OFP, OFR, and OFRS series filters are recommended.



# Model Code



**1 Special seals**

**2 Series designation**

Displacements  $\text{cm}^3/\text{r}$  ( $\text{in}^3/\text{r}$ )

Model	Shaft end	Cover end
4535V	138 – 193 (8.41–11.75)	81 – 121 (4.94 – 7.37)

**3 Pilot designation**

**M** – Metric per ISO 3019/2 100A2HW  
**Omit** – Standard pilot

**4 Geometric displacement**

Shaft end pump

(Rated capacity (USgpm) at 1200 rpm, 6.9 bar (100 psi))

Frame size	Code	$\text{cm}^3/\text{r}$	$\text{in}^3/\text{r}$
4535V	42	138	8.41
	50	162	9.85
	60	193	11.75

**5 Port connections**

**A** – SAE 4 bolt flange

**6 Port connection modifier**

**M** – Metric port connection (4 bolt flange)  
**Omit** – Inch thread port connection (4 bolt flange)

**7 Geometric displacement**

Cover end pump  
(Rated capacity (USgpm) at 1200 rpm, 6.9 bar (100 psi))

Frame size	Code	$\text{cm}^3/\text{r}$	$\text{in}^3/\text{r}$
4535V	25	81	4.94
	30	97	5.91
	35	112	6.83
	38	121	7.37

**8 Mounting**

**F** – Foot mounting  
**Omit** – Flange mounting

**9 Shaft**

**1** – Straight keyed  
**11** – Splined  
**86** – Heavy duty straight keyed  
**192N** – Straight keyed (M pilot only)

**10 Port orientation**

(Viewed from cover end of pump)

With no. 1 outlet opposite inlet  
**AA** – No. 2 outlet opposite inlet  
**AB** – No. 2 outlet 90° CCW from inlet  
**AC** – No. 2 outlet inline with inlet  
**AD** – No. 2 outlet 90° CW from inlet

With no. 1 outlet 90° CCW from inlet  
**BA** – No. 2 outlet opposite inlet  
**BB** – No. 2 outlet 90° CCW from inlet  
**BC** – No. 2 outlet inline with inlet  
**BD** – No. 2 outlet 90° CW from inlet

With no. 1 outlet inline with inlet  
**CA** – No. 2 outlet opposite inlet  
**CB** – No. 2 outlet 90° CCW from inlet  
**CC** – No. 2 outlet inline with inlet  
**CD** – No. 2 outlet 90° CW from inlet

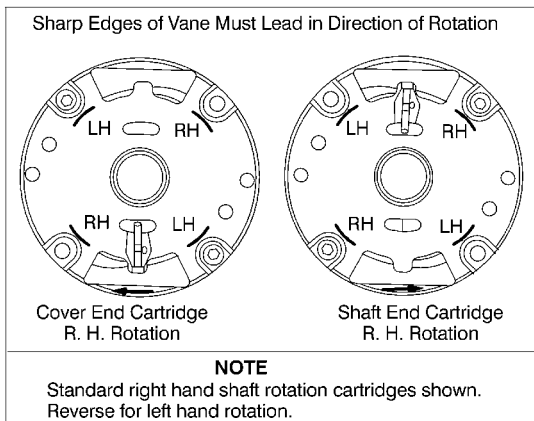
With no. 1 outlet 90° CW from inlet  
**DA** – No. 2 outlet opposite inlet  
**DB** – No. 2 outlet 90° CCW from inlet  
**DC** – No. 2 outlet inline with inlet  
**DD** – No. 2 outlet 90° CW from inlet

**11 Design**

**12 Rotation**

(Viewed from shaft end of pump)

**L** – Left hand for counterclockwise  
**R** – Right hand for clockwise



**NOTE**

To reverse cartridge kit rotation, remove the two screws and reverse the location of the inlet support plate and the outlet support plate. Reinstall the two screws hand tight. Use pump cover to align all sections of the cartridge. Carefully remove the cover and tighten the screws.

When ordering spare cartridge parts, it is recommended they be obtained in cartridge kits. Kits are assembled and tested for either right or left hand rotation. If left hand rotation is required, it should be specified on parts order by adding suffix "L" to cartridge kit number.

Eaton  
14615 Lone Oak Road  
Eden Prairie, MN 55344  
USA  
Tel: 952 937-9800  
Fax: 952 974-7722  
www.hydraulics.eaton.com

Eaton  
20 Rosamond Road  
Footscray  
Victoria 3011  
Australia  
Tel: (61) 3 9319 8222  
Fax: (61) 3 9318 5714

Eaton  
46 New Lane, Havant  
Hampshire PO9 2NB  
England  
Tel: (44) 23 92 486 451  
Fax: (44) 23 92 487 110

