

Service Data

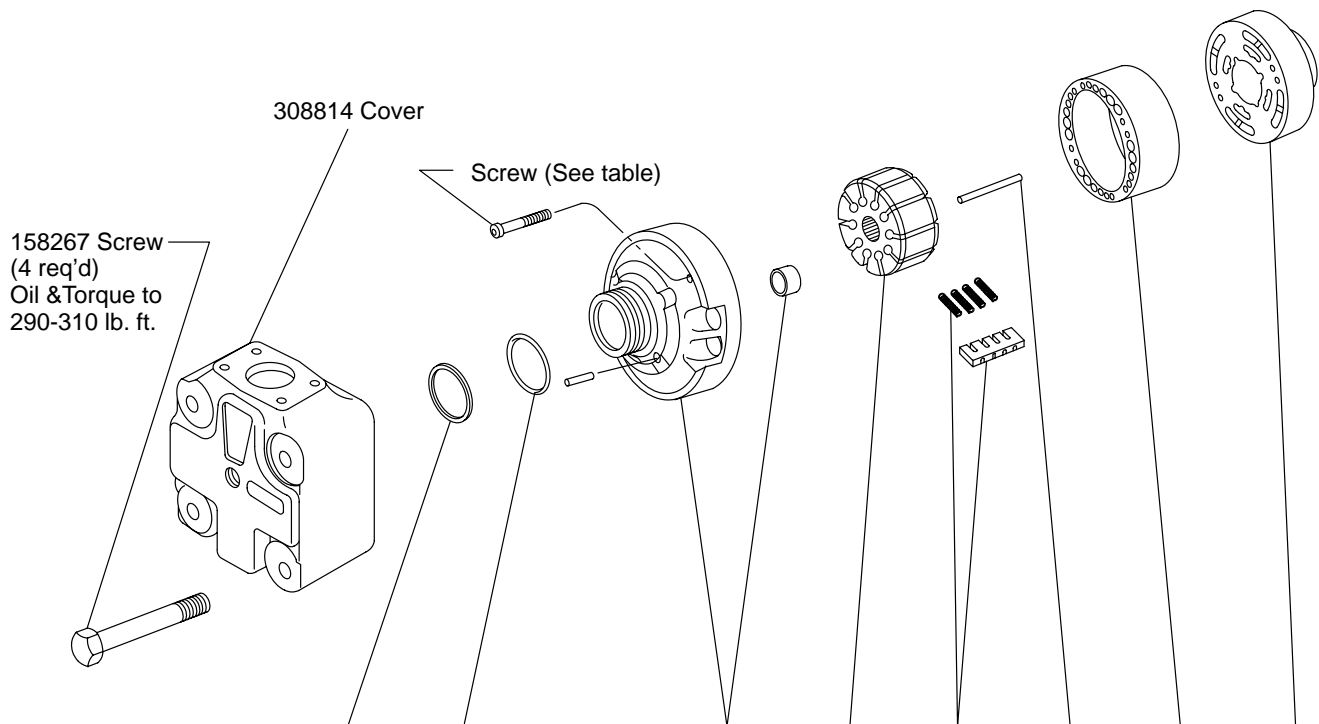
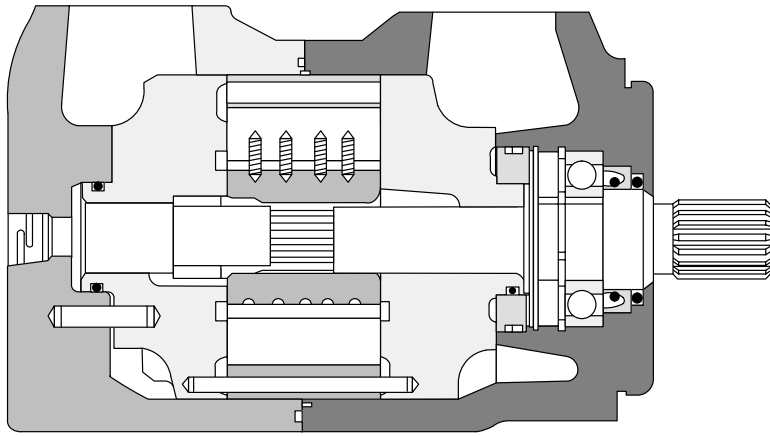
Vickers®

Vane Motors



Vane Motors

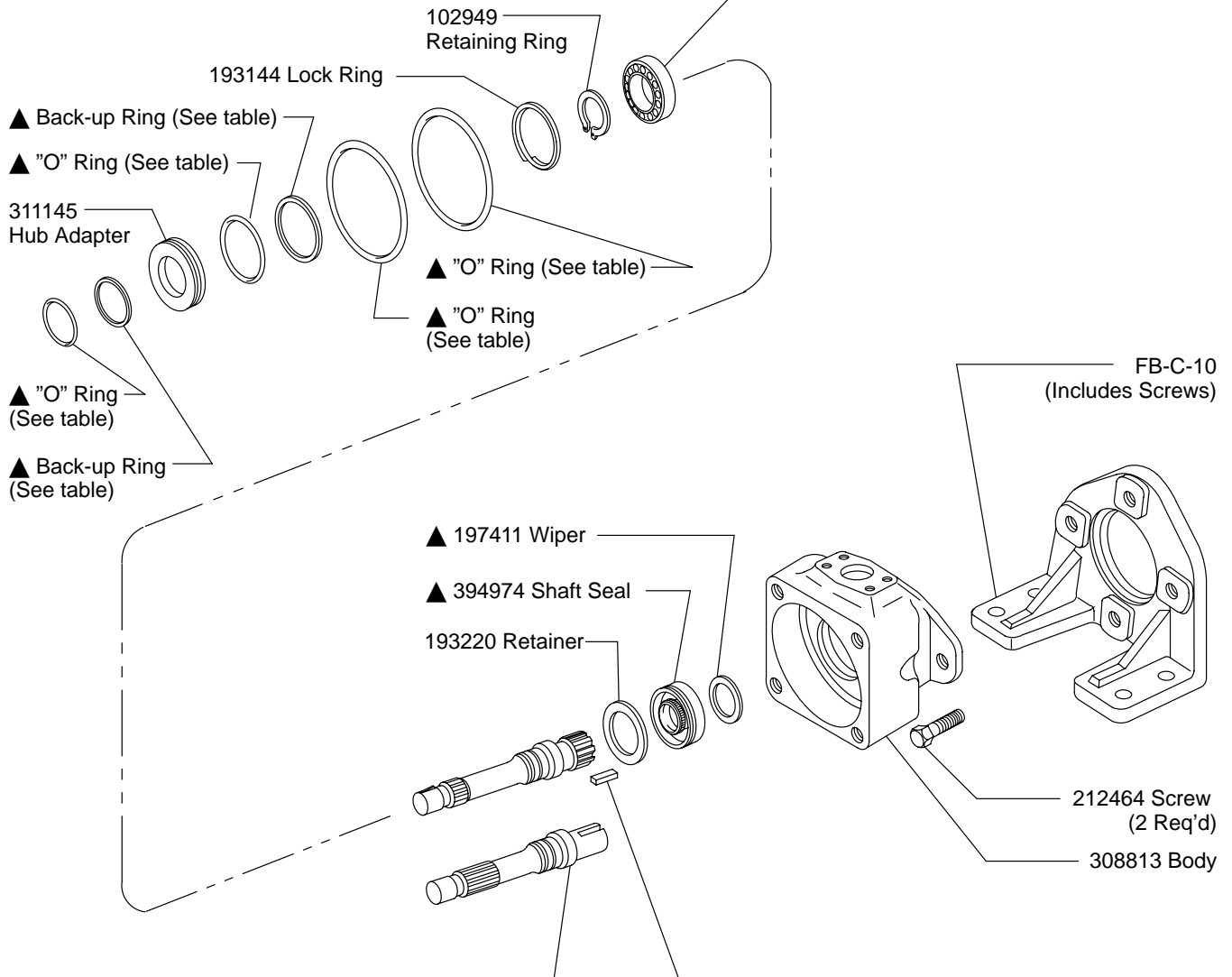
45M & 46M Series
-20 Design



Model Designation	Cartridge Kit	Back-up Ring	"O" Ring	Screw (2req'd) Torque to 8-12 lb. ft.	Pressure Plate S/A (Including Bushing and Pins)	Rotor	Vane Kit 10 Vanes 40 Springs	Pin (2 req'd)	Ring	Pressure Plate
4*M130*-**20	923111								308816	
4*M155*-**20	923110	▲ 271738	▲ 199816	255837	309403	307209	923108	194898	309416	309402
4*M185*-**20	923109								308815	

These parts are serviced in Cartridge Kit

Model Designation	Bearing
45M***-**20	8618
46M***-**20	309926

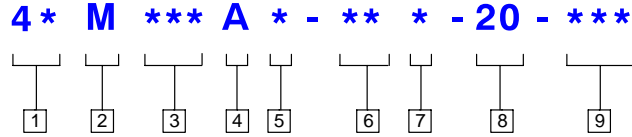


Model Designation	Shaft	Key
4*M**-1*20	309404	217596
4*M**-11*20	309405	—

Model Designation	Cartridge Kit	"O" Ring	Back-up Ring	"O" Ring	Back-up Ring	"O" Ring	"O" Ring
4*M130*-**20	923111						
4*M155*-**20	923110	▲199816	▲271738	▲154085	▲271795	▲309009	▲257447
4*M185*-**20	923109						
These parts are serviced in Cartridge Kit							

▲ Included in 923106 Seal Kit

Model Code



1 Model Series

- 45** - Standard bearing
- 46** - Heavy duty bearing

2 Vane Motor

M

3 Ring Capacity Torque

Rating (lb. in. per 100 PSI)

- 130** - 130 lb. in.
- 155** - 155 lb. in.
- 185** - 185 lb. in.

4 Port Connections

A - 4 bolt flange

5 Bracket Mounting

(Viewed from shaft end)

- 2** - Body port @ 12 o'clock
- 3** - Body port @ 3 o'clock
- 6** - Body port @ 6 o'clock
- 9** - Body port @ 9 o'clock

6 Shaft Type

- 1** - Straight keyed
- 11** - Splined

7 Port Locations

(Viewed from cover end)

- A** - Cover port opposite body port
- B** - Cover port 90° CCW from body port
- C** - Cover port in line with body port
- D** - Cover port 90° CW from body port

8 Design Number

20

9 Special Feature

For satisfactory service life of these components in industrial applications, use full flow filtration to provide fluid which meets ISO cleanliness code 20/18/15 or cleaner. Selections from Vickers OFP, OFR, and OFRS series are recommended.