

Service Data

Vickers®

Vane Motors

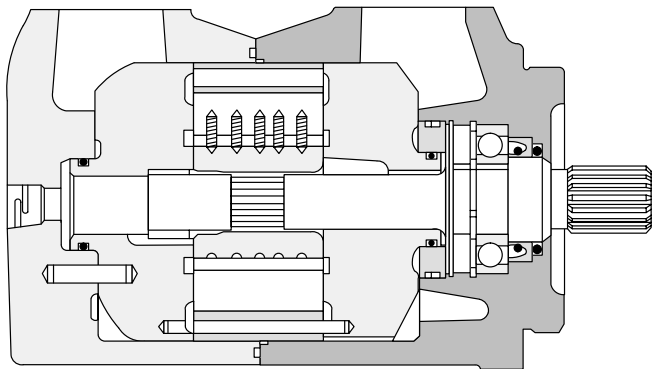


Vane Motor

50M Series-20 Design

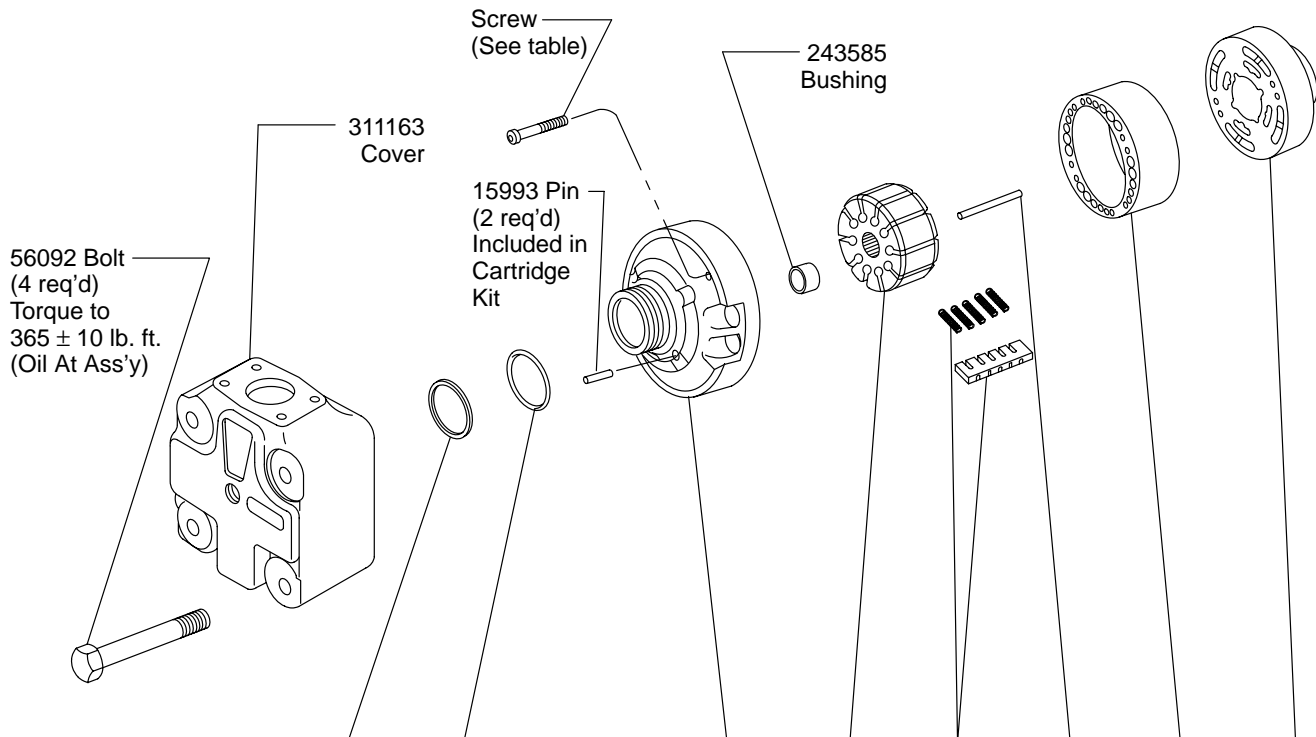


Assembly View



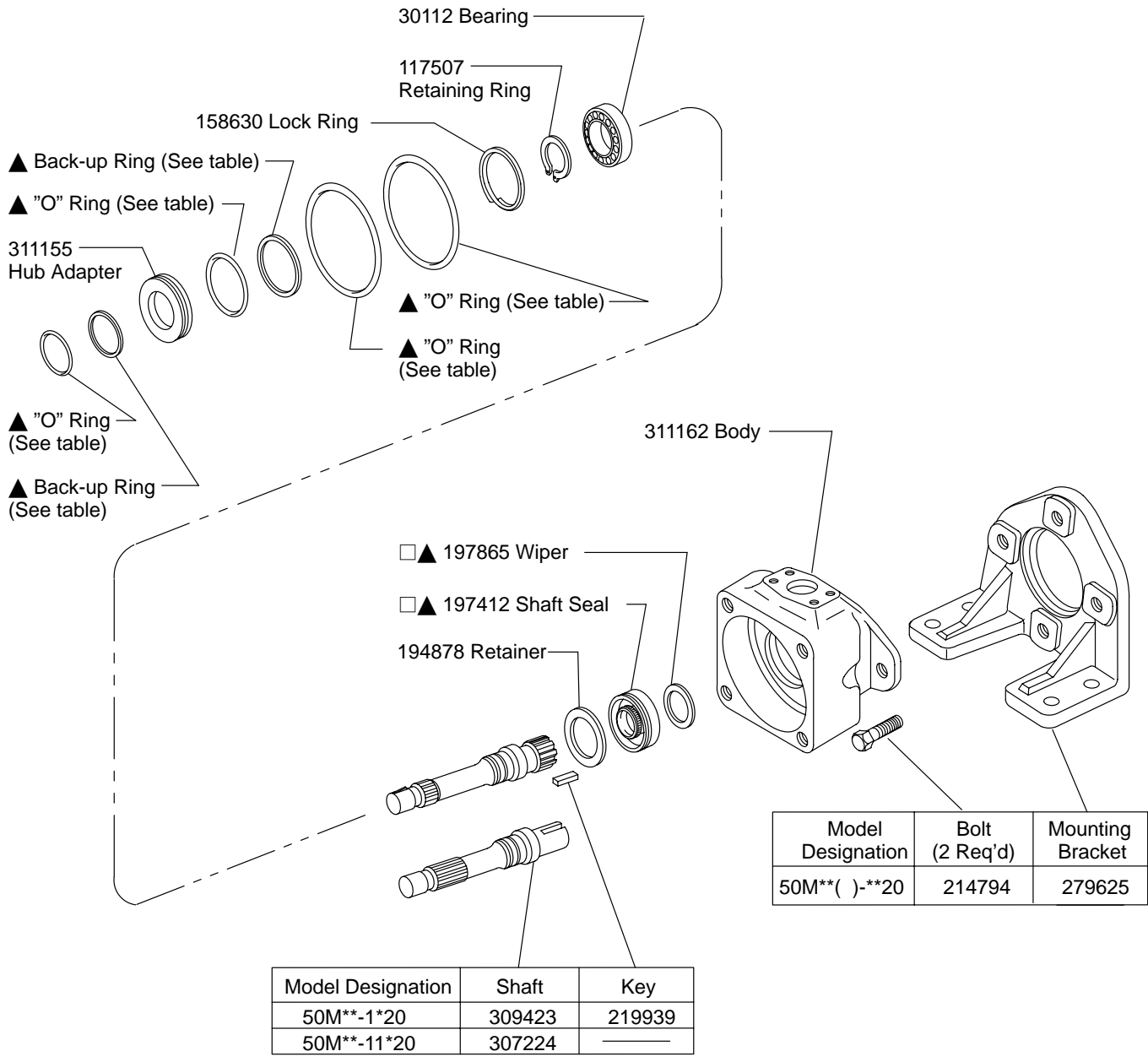
Note

Saturate the felt wiper with oil before assembly. Also, apply a small amount of grease to inner circumference of seal before installation of shaft. Assemble seal with lip toward bearing.



Model Designation	Cartridge Kit	Back-up Ring	"O" Ring	Screw (2req'd) Torque to 21 ± 3 lb. ft.	Pressure Plate S/A (Including Bushing and Pins)	Rotor	Vane Kit 10 Vanes 50 Springs	Pin (2 req'd)	Ring	Pressure Plate
50M220*-**20	923099								310863	
50M255*-**20	923100	▲ 271790	▲ 154079	310781	308825	307216	923098	309197	310864	308823
50M300*-**20	923101								310865	

These parts are services in Cartridge Kit

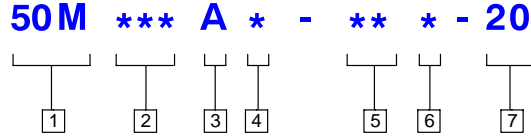


Model Designation	Cartridge Kit	"O" Ring	Back-up Ring	"O" Ring	Back-up Ring	"O" Ring	"O" Ring
50M220*-**20	923099						
50M255*-**20	923100	▲154079	▲271790	▲154089	▲271803	▲279255	▲154114
50M300*-**20	923101						

These parts are services in Cartridge Kit

▲ Included in 923096 Seal Kit

Model Code



1 Model Series

50M - Vane motor

2 Ring Capacity Torque

Rating (lb. in. per 100 PSI)

220 - 220 lb. in.

255 - 255 lb. in.

300 - 300 lb. in.

3 Port Connections

A - 4 bolt flange

4 Bracket Mounting

(Viewed from shaft end)

2 - Body port @ 12 o'clock

3 - Body port @ 3 o'clock

6 - Body port @ 6 o'clock

9 - Body port @ 9 o'clock

5 Shaft Type

1 - Straight keyed

11 - Splined

6 Port Locations

(Viewed from cover end)

A - Cover port opposite body port

B - Cover port 90° CCW from body port

C - Cover port in line with body port

D - Cover port 90° CW from body port

7 Design Number

20

For satisfactory service life of these components in industrial applications, use full flow filtration to provide fluid which meets ISO cleanliness code 20/18/15 or cleaner. Selections from Eaton OFF, OFR, and OFRS series are recommended.