

## Spare parts list

Product Unit  
Axial Piston Units

Part No.: R909601115

Designation: A11VLO130LE2S/10R-NZG12K01-K

Drawing no.: R902007266

Pos.	Part No.	Designation	Quantity	
1	R909600322	A11VLO130LE2S5/10R-NZG12K01-S	1 ST	L
6	R902603519	GEAR PUMP	1 ST	
10	R909083058	SOCKET-HEAD SCREW	2 ST	

**Safety Notes:**

Service – and repair works have to be carried out by the Bosch Rexroth AG or their repair stations only. We do not grant any warranty for defects due to assembly, maintenance or repair not effected by the Bosch Rexroth AG or their repair stations.

L = Assembly group    D = Sealing element

Page: 1

Date: 10.01.2007

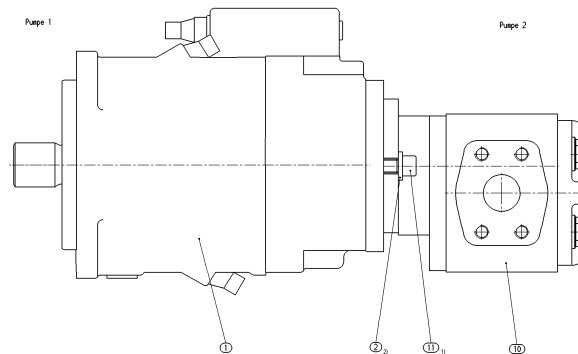
## Spare parts list

Product Unit  
Axial Piston Units

Part No.: R909601115

Designation: A11VLO130LE2S/10R-NZG12K01-K

Drawing no.: R902007266



1) Betriebsgeschwindigkeit nach ISO 15001, 2) Hydraulische bzw. Seihendruckstufe  
3) Abstände, 4) Montageabstände nach Kundenwunsch entsprechend Auswahlblatt  
5) 100% 100% Testgeschwindigkeit für "Kundenempfehlung"  
Zurückgabezeitpunkt "Kundenabgabe"

## Spare parts list

Product Unit  
Axial Piston Units

Part No.: R909600322

Designation: A11VLO130LE2S5/10R-NZG12K01-S

Drawing no.: R909713335

Pos.	Part No.	Designation	Quantity	
1	R902041954	ROTARY GROUP, RIGHT-HAND ROTATION	1 ST	L
2	R909448362	PORT PLATE WITH ACCESSORIES	1 ST	L
3	R909601107	REGULATOR	1 ST	L
4	R909601773	CONTROL, HYDRAULIC	1 ST	L
5	R909601776	CONTROL, HYDRAULIC	1 ST	L
7	R909601128	PUMP SUPPORT PLATE	1 ST	L
10	R902089444	HOUSING	1 ST	
11	R909443013	JOINT PIN	4 ST	
12	R909921832	IMPELLER, RIGHT-HAND ROTAT.	1 ST	
20	R909449078	THREADED PIN	2 ST	
22	R909152426	SEAL LOCK NUT	2 ST	D
24	R909153364	LOCKING SCREW	4 ST	D
25	R909830782	SOCKET-HEAD SCREW	4 ST	
26	R909083835	O-RING	1 ST	D
27	R909153891	LOCKING SCREW	3 ST	D
28	R909156579	CLAMPING PIN	2 ST	D
29	R909083360	RETAINING RING	2 ST	
40	R909151979	LOCKING SCREW	1 ST	D
98	R902095610	SEAL KIT, COMPLETE	1 ST	

L = Assembly group    D = Sealing element

Page: 3

Date: 10.01.2007

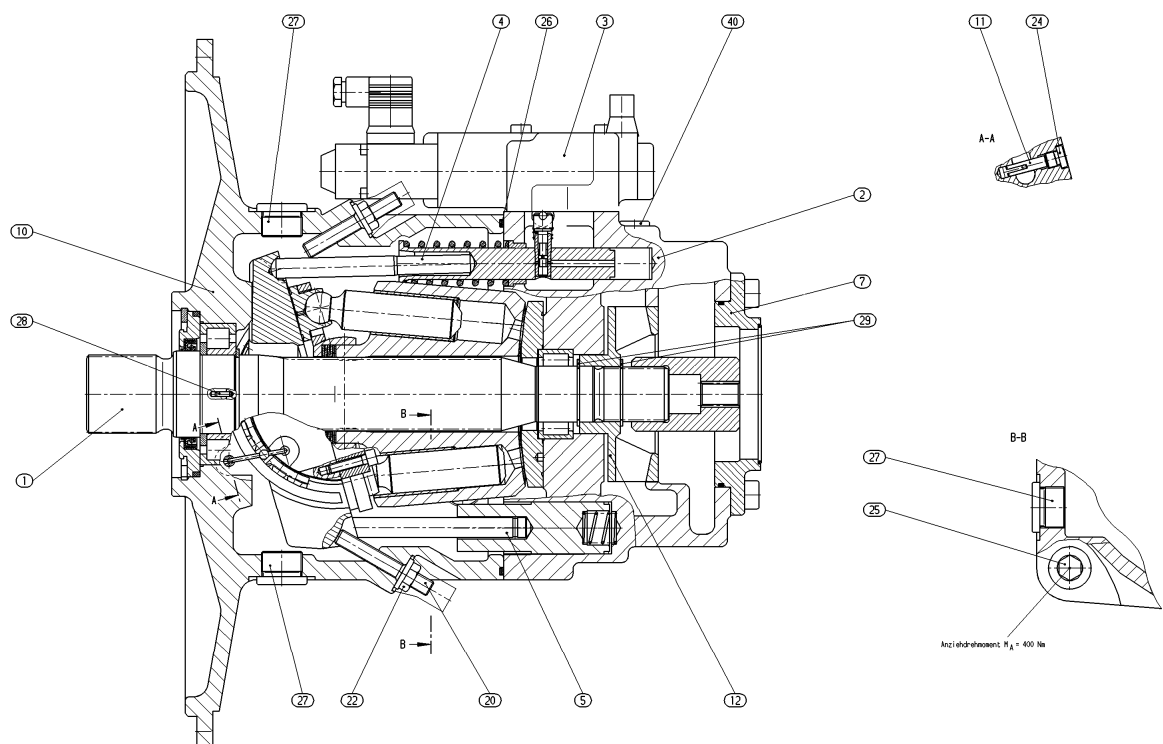
## Spare parts list

Product Unit  
Axial Piston Units

Part No.: R909600322

Designation: A11VLO130LE2S5/10R-NZG12K01-S

Drawing no.: R909713335



## Spare parts list

Product Unit  
Axial Piston Units

Part No.: R902041954

Designation: ROTARY GROUP, RIGHT-HAND ROTATION

Drawing no.: R902061594

Pos.	Part No.	Designation	Quantity	
1	R902041937	CYLINDER WITH CONTROL PLATE	1 ST	L
2	R909078189	PISTON-SLIPPER PAD	9 ST	
11	R909074128	CUP-SPRING STACK	1 ST	
12	R909445879	CRADLE	1 ST	
14	R909921396	DRIVE SHAFT	1 ST	
16	R902034801	COVER	1 ST	D
17	R909417959	WIRE	4 ST	
20	R909412706	SHIM	1 ST	
20	R909412707	SHIM	1 ST	
20	R909413043	SHIM	1 ST	
20	R909078319	SHIM	1 ST	
21	R909412706	SHIM	1 ST	
24	R909431914	RETAINING PLATE	1 ST	
25	R902041873	RETAINING BALL	1 ST	
26	R902066599	BEARING LINER (PAIR)	1 ST	
30	R909431891	RETAINING SEGMENT	2 ST	
31	R909156269	PLAIN ROLLER BEARING	1 ST	
32	R902600959	CRADLE BEARING ASSEMBLY ( SET)	1 ST	
36	R909084416	RETAINING RING	1 ST	
37	R909154528	RETAINING RING	1 ST	
38	R909154345	SHAFT SEAL RING	1 ST	D
39	R909154986	O-RING	1 ST	D
47	R909831330	SOCKET-HEAD SCREW	4 ST	

L = Assembly group    D = Sealing element

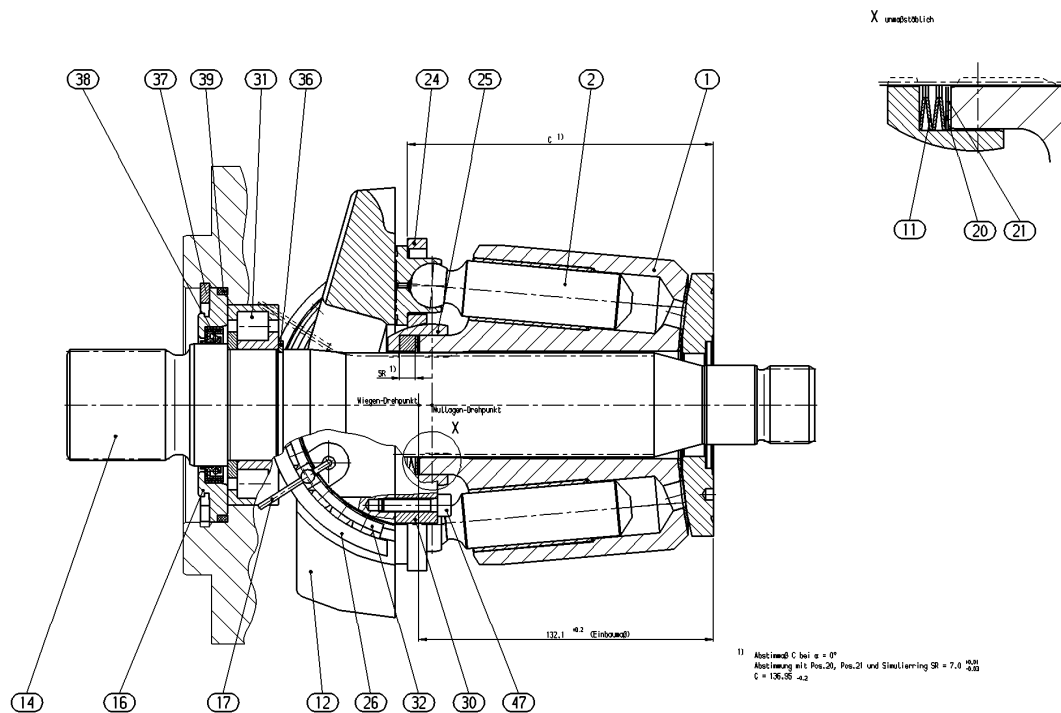
## Spare parts list

Product Unit  
Axial Piston Units

Part No.: R902041954

Designation: ROTARY GROUP, RIGHT-HAND ROTATION

Drawing no.: R902061594



## Spare parts list

Product Unit  
Axial Piston Units

Part No.: R902041937

Designation: CYLINDER WITH CONTROL PLATE

Pos.	Part No.	Designation	Quantity
1	R902041931	CYLINDER WITH BUSH	1 ST
2	R902010111	CONTROL PLATE, RIGHT-HAND ROT.	1 ST

## Spare parts list

Product Unit  
Axial Piston Units

Part No.: R909448362

Designation: PORT PLATE WITH ACCESSORIES

Drawing no.: R909705636

Pos.	Part No.	Designation	Quantity	
2	R909650241	PORT PLATE, RIGHT-HAND ROTAT.	1 ST	
10	R909156310	PLAIN ROLLER BEARING	1 ST	
11	R909831318	DOUBLE BREAK-OFF PIN	4 ST	D
13	R909087170	CYLINDER PIN	2 ST	
14	R909087755	CYLINDER PIN	1 ST	D
16	R909152464	O-RING	1 ST	D
17	R902602890	SEAL RING	3 ST	D
19	R909151692	LOCKING SCREW	2 ST	D
20	R909154024	LOCKING SCREW	2 ST	D
21	R909156495	ORIFICE	1 ST	
22	R909156494	ORIFICE	1 ST	D
98	R902002467	SEAL KIT PORT PLATE	1 ST	



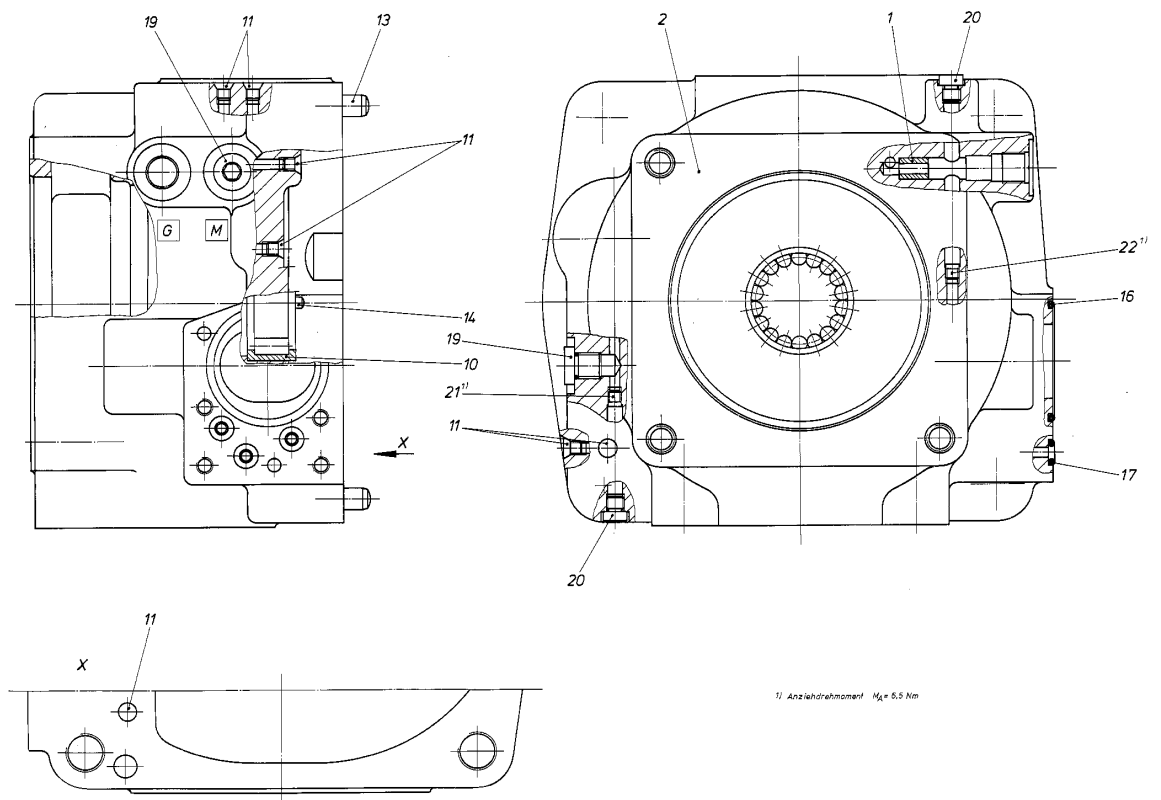
## Spare parts list

Product Unit  
Axial Piston Units

Part No.: R909448362

Designation: PORT PLATE WITH ACCESSORIES

Drawing no.: R909705636



## Spare parts list

Product Unit  
Axial Piston Units

Part No.: R909601107

Designation: REGULATOR

Drawing no.: R909725679

Pos.	Part No.	Designation	Quantity	
1	R909601148	CONTROL ELEMENT	1 ST	L
3	R909448351	CONTROL ELEMENT	1 ST	L
4	R902002659	MEASURING PISTON	1 ST	L
10	R909922016	CONTROL HOUSING	1 ST	
20	R909445457	ANGLE LEVER	1 ST	
21	R909440788	BEARING BOLT	1 ST	
22	R909431286	BEARING BUSHING	1 ST	
24	R909445306	DOUBLE BREAK-OFF PIN	1 ST	D
50	R909083044	SOCKET-HEAD SCREW	1 ST	D
51	R909087751	CYLINDER PIN	2 ST	
52	R909831318	DOUBLE BREAK-OFF PIN	7 ST	D
53	R909151979	LOCKING SCREW	1 ST	D
57	R909083045	SOCKET-HEAD SCREW	4 ST	
60	R909087248	RETAINING RING	1 ST	
61	R909083724	O-RING	1 ST	D
98	R902002475	SEAL KIT REGULATOR	1 ST	

L = Assembly group    D = Sealing element

Page: 10

Date: 10.01.2007

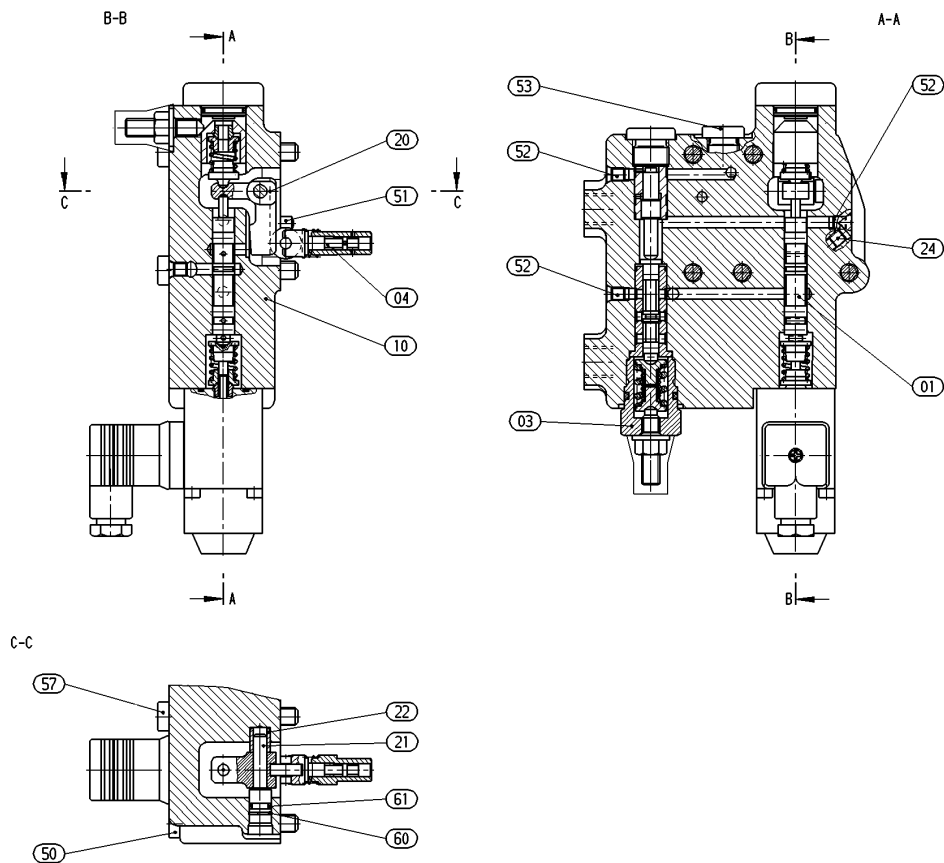
## Spare parts list

Product Unit  
Axial Piston Units

Part No.: R909601107

Designation: REGULATOR

Drawing no.: R909725679



L = Assembly group    D = Sealing element

## Spare parts list

Product Unit  
Axial Piston Units

Part No.: R909601148

Designation: CONTROL ELEMENT

Drawing no.: R909725811

Pos.	Part No.	Designation	Quantity	
2	R902022771	CONTROL PISTON	1 ST	
3	R909449617	SPRING BOLT	1 ST	
4	R909921097	SPRING BOLT	1 ST	
5	R902005694	PRESSURE SPRING	1 ST	
6	R909436459	PRESSURE SPRING	1 ST	
7	R909449721	COVER	1 ST	
8	R909921096	ADJUSTING BUSHING	1 ST	
9	R909443457	BOLT	1 ST	
10	R909086268	THREADED PIN	1 ST	
11	R909152707	SEAL LOCK NUT	1 ST	D
12	R909083737	O-RING	1 ST	D
13	R909084939	O-RING	1 ST	D
15	R909083018	SOCKET-HEAD SCREW	4 ST	D
19	R902602623	PLUG SOCKET	1 ST	
20	R909441692	PROPORTIONAL SOLENOID WITH SCREWS	1 ST	L
21	R909449619	SPRING DISC	2 ST	
22	R909449618	SPRING COLLAR	2 ST	

L = Assembly group    D = Sealing element

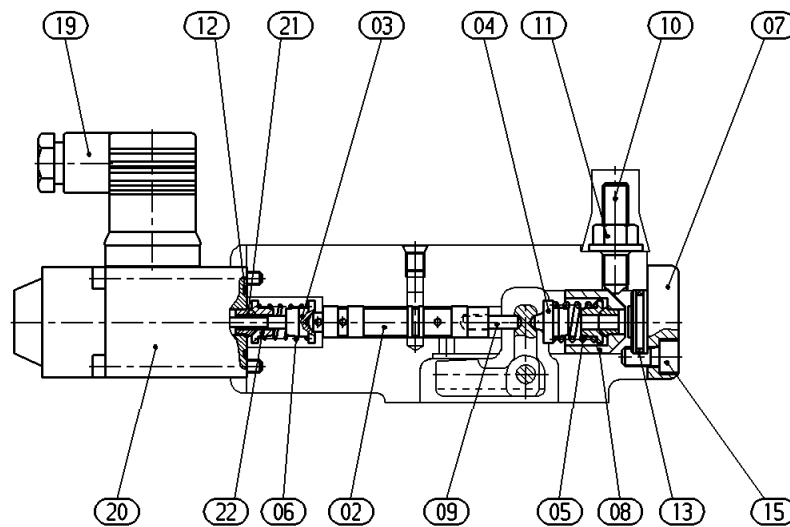
## Spare parts list

Product Unit  
Axial Piston Units

Part No.: R909601148

Designation: CONTROL ELEMENT

Drawing no.: R909725811



## Spare parts list

Product Unit  
Axial Piston Units

Part No.: R909441692

Designation: PROPORTIONAL SOLENOID WITH SCREWS

Drawing no.: R909732691

Pos.	Part No.	Designation	Quantity
1	R909830754	SOLENOID	1 ST
2	R909086070	SOCKET-HEAD SCREW	4 ST

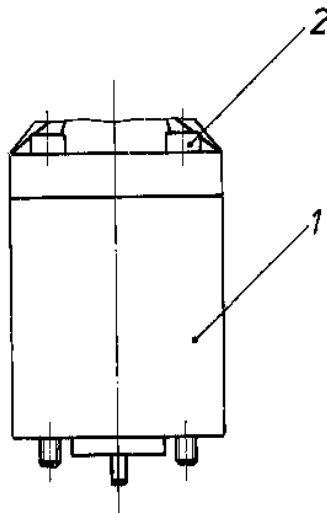
## Spare parts list

Product Unit  
Axial Piston Units

Part No.: R909441692

Designation: PROPORTIONAL SOLENOID WITH SCREWS

Drawing no.: R909732691



## Spare parts list

Product Unit  
Axial Piston Units

Part No.: R909448351

Designation: CONTROL ELEMENT

Drawing no.: R909725829

Pos.	Part No.	Designation	Quantity	
1	R902033700	LOCKING SCREW	1 ST	
2	R909449719	CONTROL PISTON	1 ST	
3	R909436839	SPRING BOLT	2 ST	
4	R909652128	DIFFERENTIAL PISTON	1 ST	
5	R909436394	PRESSURE SPRING	1 ST	
6	R909436395	PRESSURE SPRING	1 ST	
8	R909444953	THREADED PIN	1 ST	
9	R902004934	CONTROL BUSH	1 ST	
11	R909152707	SEAL LOCK NUT	1 ST	D
12	R909083758	O-RING	1 ST	D
14	R909153816	LOCKING SCREW	1 ST	D
26	R909449615	SETTING BUSH	1 ST	



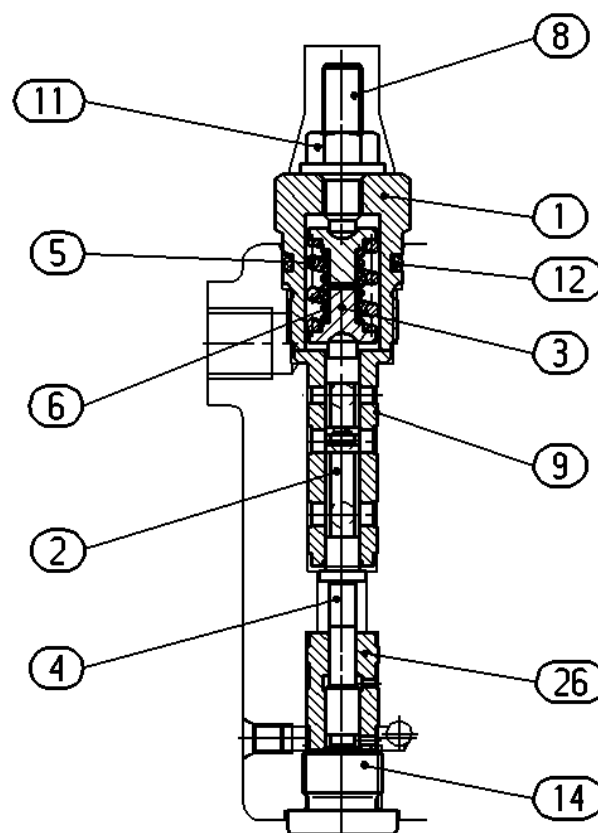
## Spare parts list

Product Unit  
Axial Piston Units

Part No.: R909448351

Designation: CONTROL ELEMENT

Drawing no.: R909725829



L = Assembly group    D = Sealing element

Page: 17

Date: 10.01.2007

## Spare parts list

Product Unit  
Axial Piston Units

Part No.: R902002659

Designation: MEASURING PISTON

Drawing no.: R902002882

Pos.	Part No.	Designation	Quantity
1	R902002554	MEASURING PISTON	1 ST
2	R902002555	SETTING BUSH	1 ST
4	R902012033	PRESSURE SPRING	1 ST
4	R902080419	PRESSURE SPRING	1 ST
4	R909440791	PRESSURE SPRING	1 ST
10	R909444435	ROLLER	1 ST

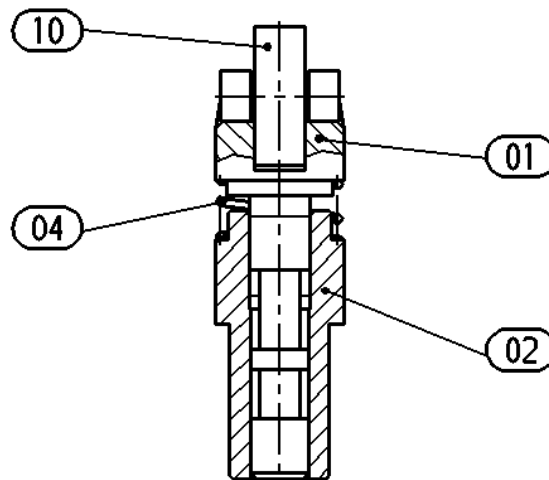
## Spare parts list

Product Unit  
Axial Piston Units

Part No.: R902002659

Designation: MEASURING PISTON

Drawing no.: R902002882



## Spare parts list

Product Unit  
Axial Piston Units

Part No.: R909601773

Designation: CONTROL, HYDRAULIC

Drawing no.: R909730291

Pos.	Part No.	Designation	Quantity
1	R909651036	POSITIONING PISTON	1 ST
2	R909651029	ROD	1 ST
2	R909651030	ROD	1 ST
2	R902027730	ROD	1 ST
2	R909651028	ROD	1 ST
3	R909444263	PRESSURE SPRING	1 ST
5	R902025363	BUSH	1 ST

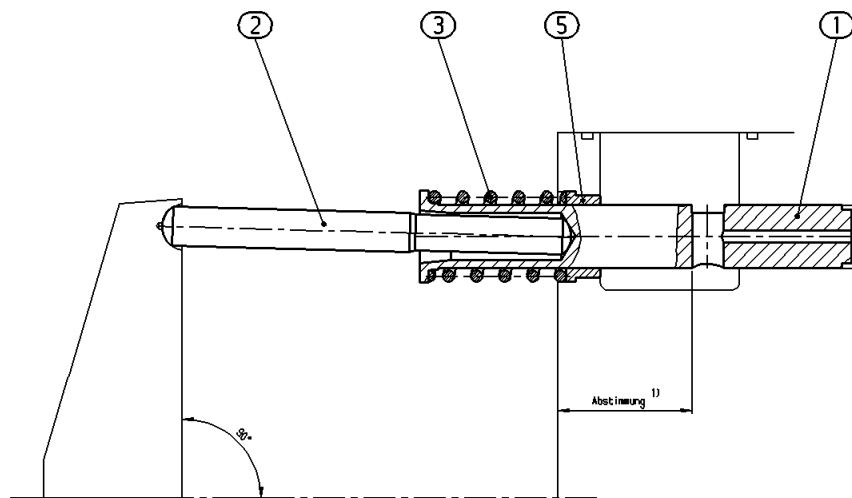
## Spare parts list

Product Unit  
Axial Piston Units

Part No.: R909601773

Designation: CONTROL, HYDRAULIC

Drawing no.: R909730291



1) siehe Maßblatt

## Spare parts list

Product Unit  
Axial Piston Units

Part No.: R909601776

Designation: CONTROL, HYDRAULIC

Drawing no.: R909730294

Pos.	Part No.	Designation	Quantity
1	R909921506	RETURN PISTON	1 ST
2	R909445769	RETURN ROD	1 ST
3	R909443435	PRESSURE SPRING	1 ST

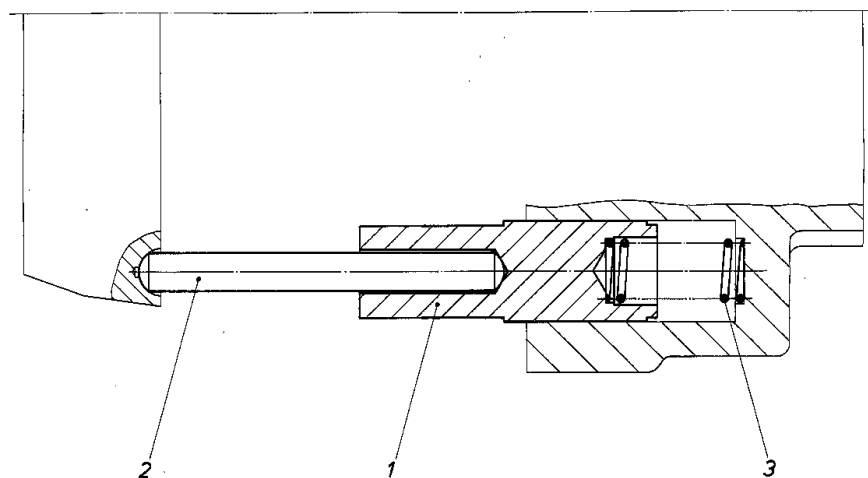
## Spare parts list

Product Unit  
Axial Piston Units

Part No.: R909601776

Designation: CONTROL, HYDRAULIC

Drawing no.: R909730294



## Spare parts list

Product Unit  
Axial Piston Units

Part No.: R909601128

Designation: PUMP SUPPORT PLATE

Drawing no.: R909732176

Pos.	Part No.	Designation	Quantity	
1	R909449635	FLANGE	1 ST	
2	R909449035	CLUTCH HUB	1 ST	
13	R909083087	SOCKET-HEAD SCREW	4 ST	
14	R909157997	O-RING	1 ST	D
15	R902600381	O-RING	1 ST	D
98	R902095514	SEAL KIT PUMP SUPPORT PLATE	1 ST	



## Spare parts list

Product Unit  
Axial Piston Units

Part No.: R909601128

Designation: PUMP SUPPORT PLATE

Drawing no.: R909732176

