

Service Data

Vickers®

# Vane Motors

---



## Vane Motors

M2U Series - 10 Design



Revised 11/01/85

M-2711-S

Model Designation	Seal Kit	"O" Ring (2 req'd)
		Serviced in Seal Kit
M2U-****- 1*10	922732	154090
M2U-****- 3*10	922733	
M2U-****-11*10	922732	

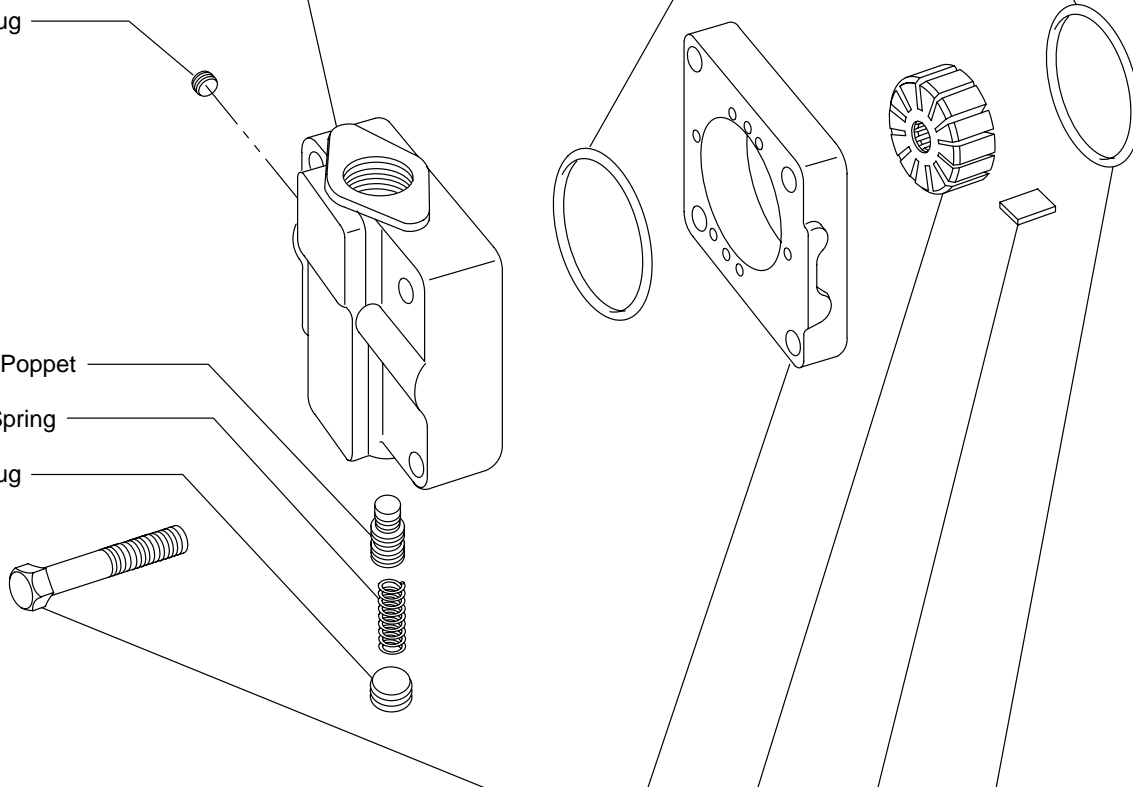
Model Designation	Cover
M2U-*S**-**10	285436
M2U-*T**-**10	327624

7076 Plug

280719 Poppet

25896 Spring

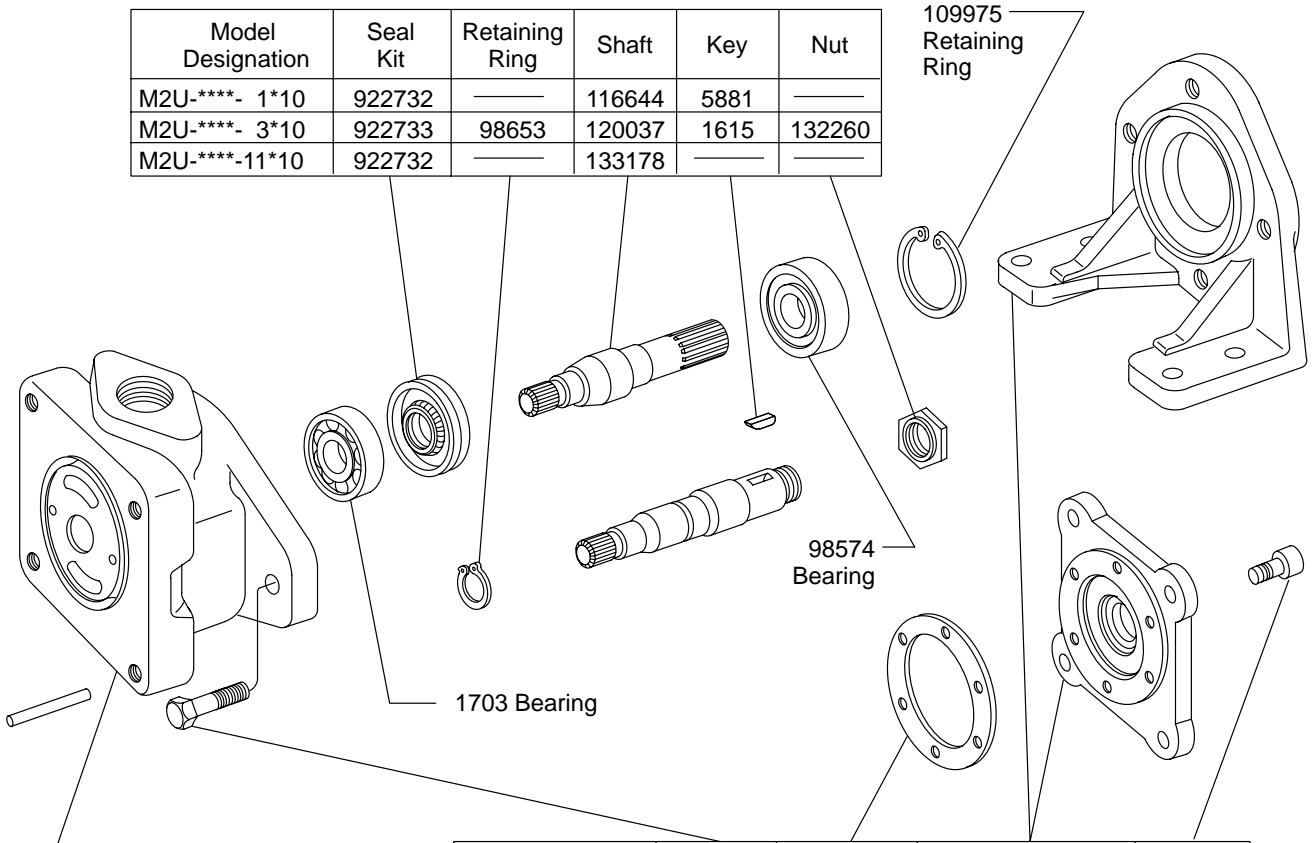
7078 Plug



Model Designation	Screw (4 req'd) Oil & Torque to 70 ± 5 lbf. ft	Ring	Rotor	Vane Kit (12 Vanes)	"O" Ring (2 req'd)	Cartridge Kit
		Serviced in Cartridge Kit				
M2U-**15*-**10	131486	293587	172302	912031	154090	923057
M2U-**18*-**10		288833				922929
M2U-**25*-**10	1319	288835	172294	912032		922930
M2U-**35*-**10		288837	215043	922568		922931

**Include Complete Model Number on All Parts Orders**

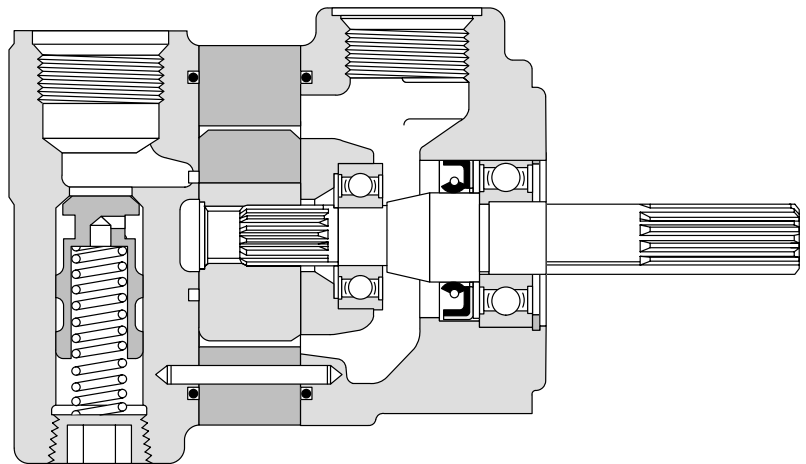
Model Designation	Seal Kit	Retaining Ring	Shaft	Key	Nut
M2U-****- 1*10	922732	————	116644	5881	————
M2U-****- 3*10	922733	98653	120037	1615	132260
M2U-****-11*10	922732	————	133178	————	————



Body	Model Designation
119375	M2U- 1**P-**10
162250	M2U- 1**S-**10
116655	M2U- 1**F-**10
119986	M2U- 4**P-**10
286629	M2U- 4**S-**10

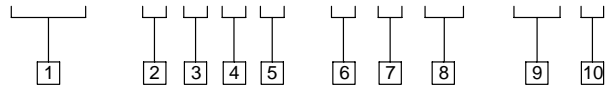
Model Designation	Screw	Seal	Mounting Bracket	Screw
M2U-2***-**10	177939 (2 req'd)	————	Foot Bkt. FB-A-10 (Includes Screws)	————
M2U-3***-**10	————	("O" Ring) 154084	(Flange) 128893	1272-A (2 req'd)
M2U-5***-**10	————	(Gasket) 2546	(Flange) 131966	1070 (6 req'd)

**Assembly View**



# Model Code

**M2U - \* \* \* \* - \* \* 10 - \*\*\* L**



## 1 Model Series

**M2U** - Vane type motor, M200 size  
Unidirectional rotation

## 2 Motor Mounting

1 - 2 bolt  
2 - Foot Mount  
3 - Power take-off  
4 - Face  
5 - Flange  
6 - Foot integral with body

## 3 Inlet Port Configuration

**P** - Pipe thread  
**S** - 1.312-12 SAE straight thread  
**F** - 2 bolt flange (no flanges)  
**T** - 1.062-12 SAE straight thread

## 4 Ring Capacity

(lbf. in. per 100 PSI)

15 - 15  
18 - 18  
25 - 25  
35 - 35

## 5 Outlet Port

**P** - 1.00 NPT  
**S** - 1.312-12 SAE straight thread  
**F** - 2 bolt flange (no flanges)  
**T** - 1.062-12 SAE straight thread

## 6 Shaft Type

1 - Straight keyed  
3 - Threaded (engine drive)  
11 - Splined

## 7 Cover Position

(Viewed from cover end)

**A** - Opposite outlet connection  
**C** - Inline with outlet connection

## 8 Design Number

10

## 9 Special Feature

**10** **Left Hand Rotation**  
(Omit for right hand rotation)

For satisfactory service life of these components in industrial applications, use full flow filtration to provide fluid which meets ISO cleanliness code 20/18/15 or cleaner. Selections from Eaton OFP, OFR, and OFRS series are recommended.