

Piston Pumps & Motors



20 and 29 USgpm Inline Piston Units

PFB20-(F)*-10

MFB20-(F)U-10

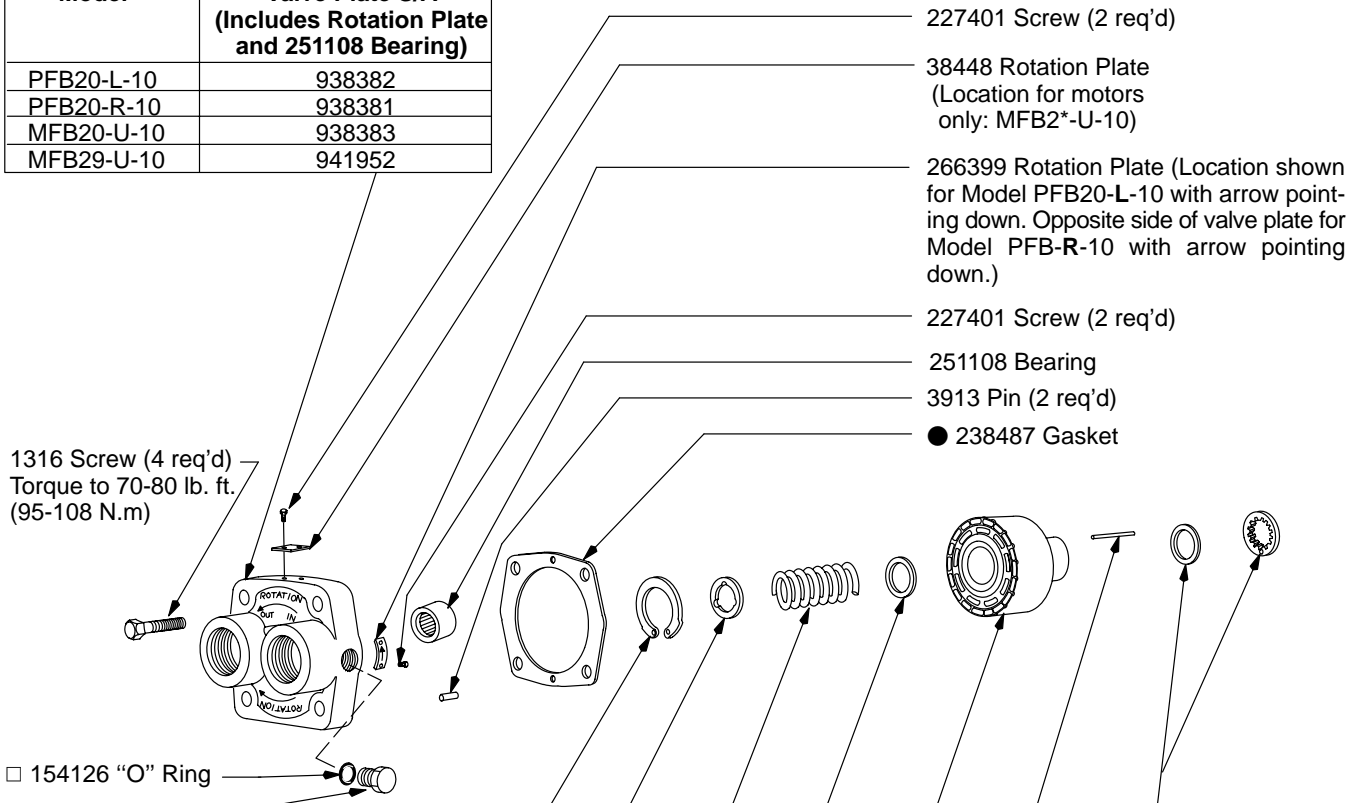
MFB29-(F)U-10

□ Used on MFB29-(F)U-10 only.

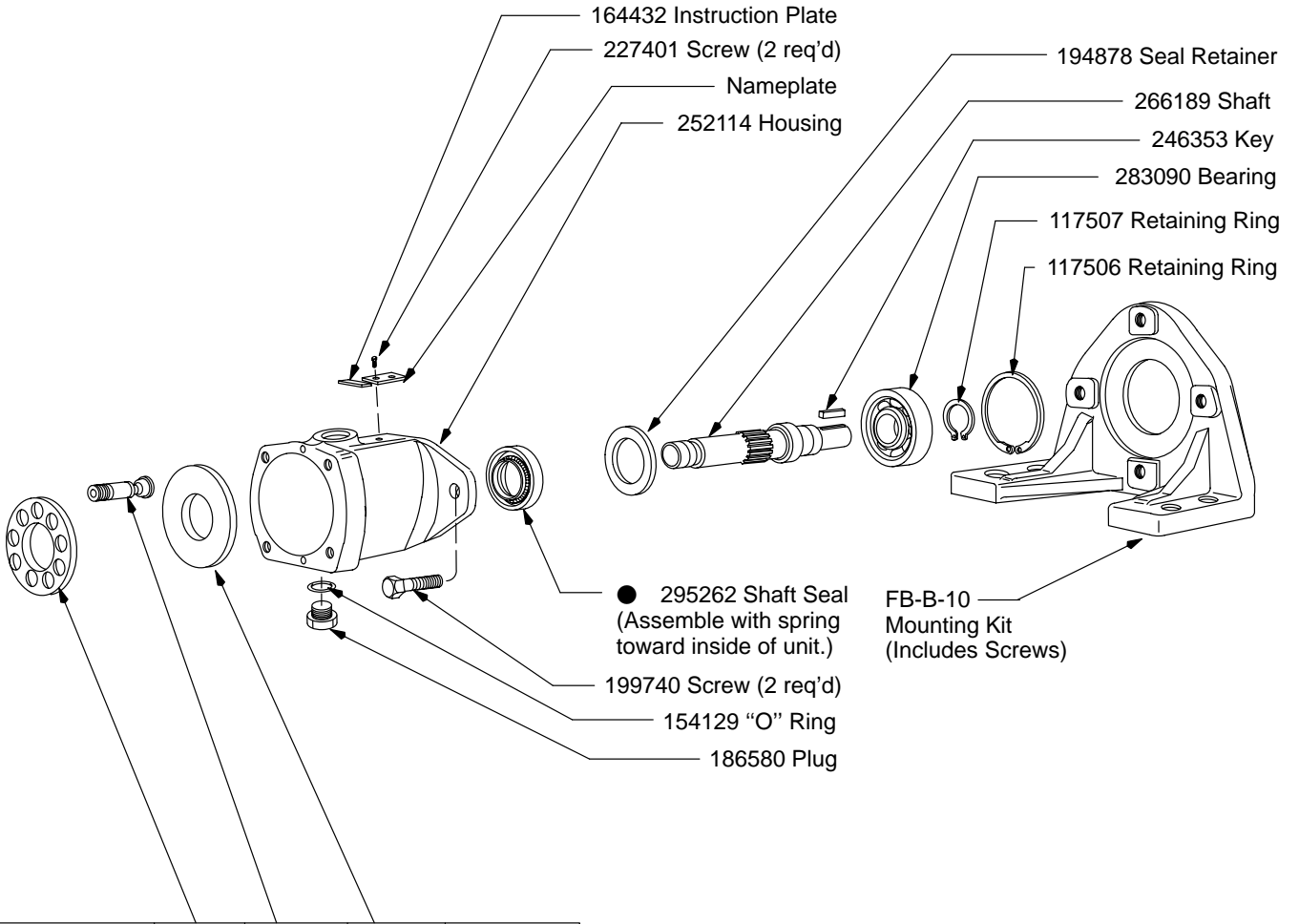
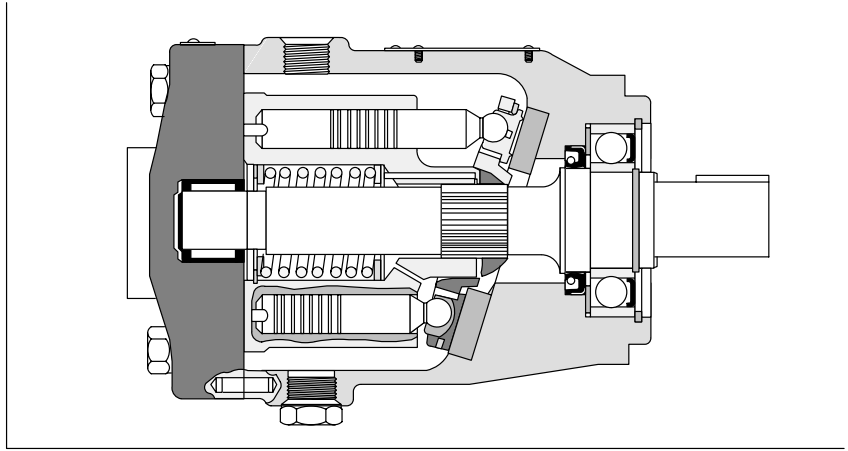
● Included in
919242 Seal Kit

F3 Equivalent
919313 Seal Kit

Model	Valve Plate S/A (Includes Rotation Plate and 251108 Bearing)
PFB20-L-10	938382
PFB20-R-10	938381
MFB20-U-10	938383
MFB29-U-10	941952

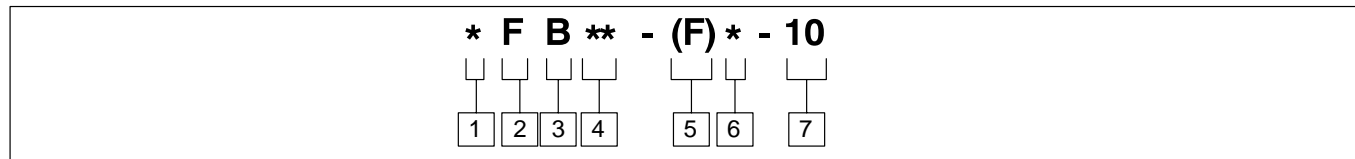


Model	Retain. Ring	Washer	Spring	Washer	Cylinder Block	Pin (3 req'd)	Washer S/A	Rotating Group Kit
These parts included in								
PFB20-L-10	194025	244931	246386	238780	250688	248835	938392	938280
PFB20-R-10			246387		284197			938281
MFB20-U-10			287454		938295			
MFB29-U-10								



Model	Shoe Plate	Piston S/A Kit	Swash Plate	Rotating Group Kit
These parts included in				
PFB20-L-10	248609	941883	239335	938280
PFB20-R-10		941884		938281
MFB20-U-10		941885		938295
MFB29-U-10				

Model Code



1 Model

M - Motor
P - Pump

2 Fixed Displacement

3 Inline type

4 Flow rating @ 1800 rpm

20 - 20 USgpm
29 - 29 USgpm

5 Mounting

F - Foot bracket
Omit when not included.

6 Rotation

(Viewed from shaft end)
R - Right Hand (Pumps only)
L - Left Hand (Pumps only)
U - Either direction (Motor only)

7 Design

For satisfactory service life of these components, use full flow filtration to provide fluid which meets ISO cleanliness code 16/13 or cleaner. Selections from pressure, return, and in-line filter series are recommended.