

DENISON Hydraulics SERVICE LITERATURE

CYLINDER CONTROLS

THE DENISON CYLINDER CONTROLS ARE FOR USE
WITH DENISON VARIABLE VOLUME PUMPS

OLD MODEL NUMBER	SERIES	NEW MODEL NUMBER
PA-072-565-L	600	PV06-007-51L-05
PA-072-565-R	600	PV06-007-51R-05
PA-202-575-L	700	PV07-020-51L-05
PA-202-575-R	700	PV07-020-51R-05
PA-352-585-L	800	PV08-035-51L-05
PA-352-585-R	800	PV08-035-51R-05

GENERAL INFORMATION

Denison hydraulic pumps of the 600, 700 and 800 series are available with cylinder control of pump delivery. These variable volume pumps provide oil delivery rates up to 35 gpm for 5000 psi service.

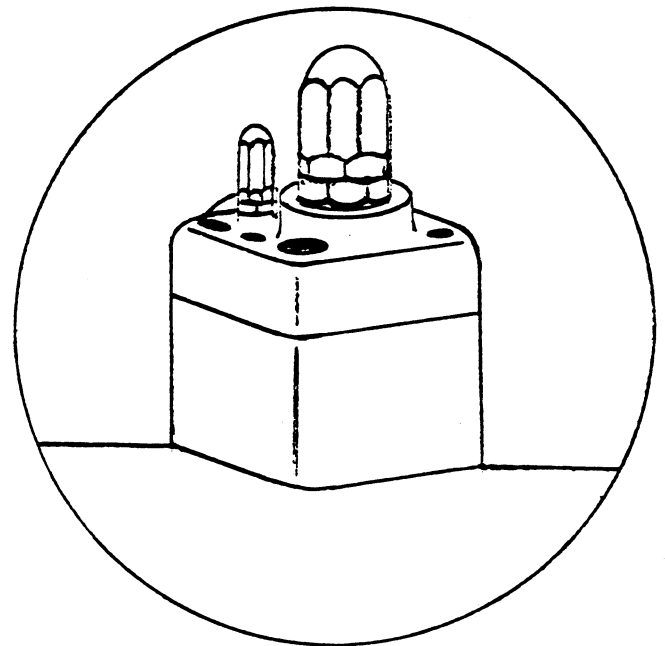
A hydraulically operated cylinder mounted on a pad on top of pump housing moves the pump hanger or yoke to minimum and maximum delivery positions. Hydraulic power for operation of the cylinder control may be derived from the system of the unit or from an external power source. Change in the position of hanger regulates the length of piston stroke, thus controlling volume of pump delivery.

An adjustable minimum delivery stop is mounted on a pad on bottom of the housing. A screw adjustment is also provided for regulating the maximum delivery.

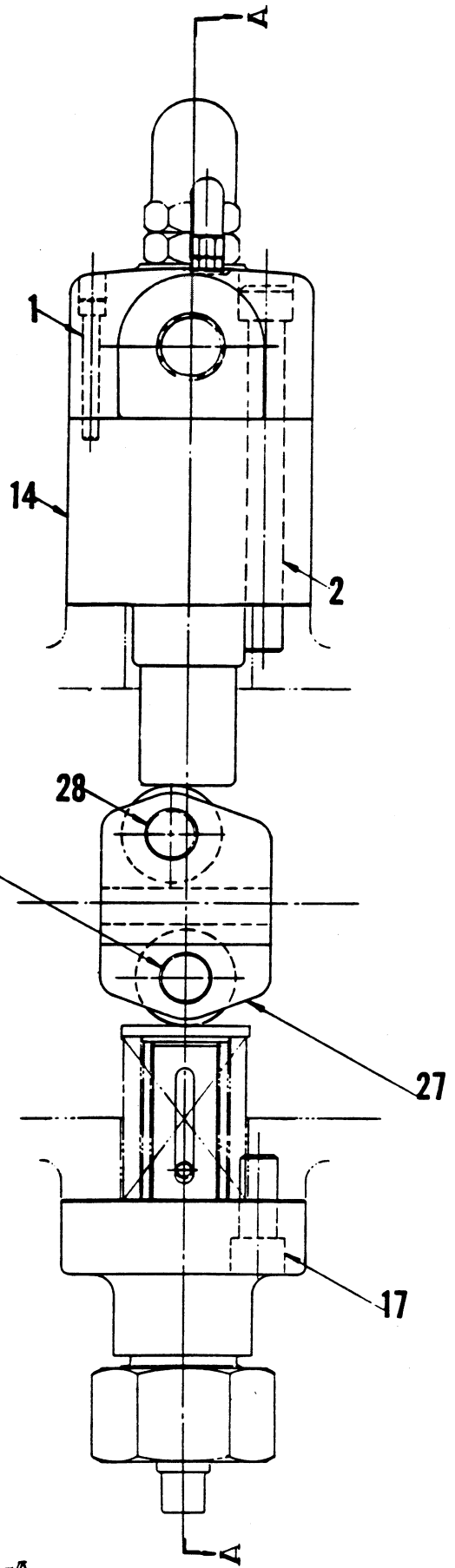
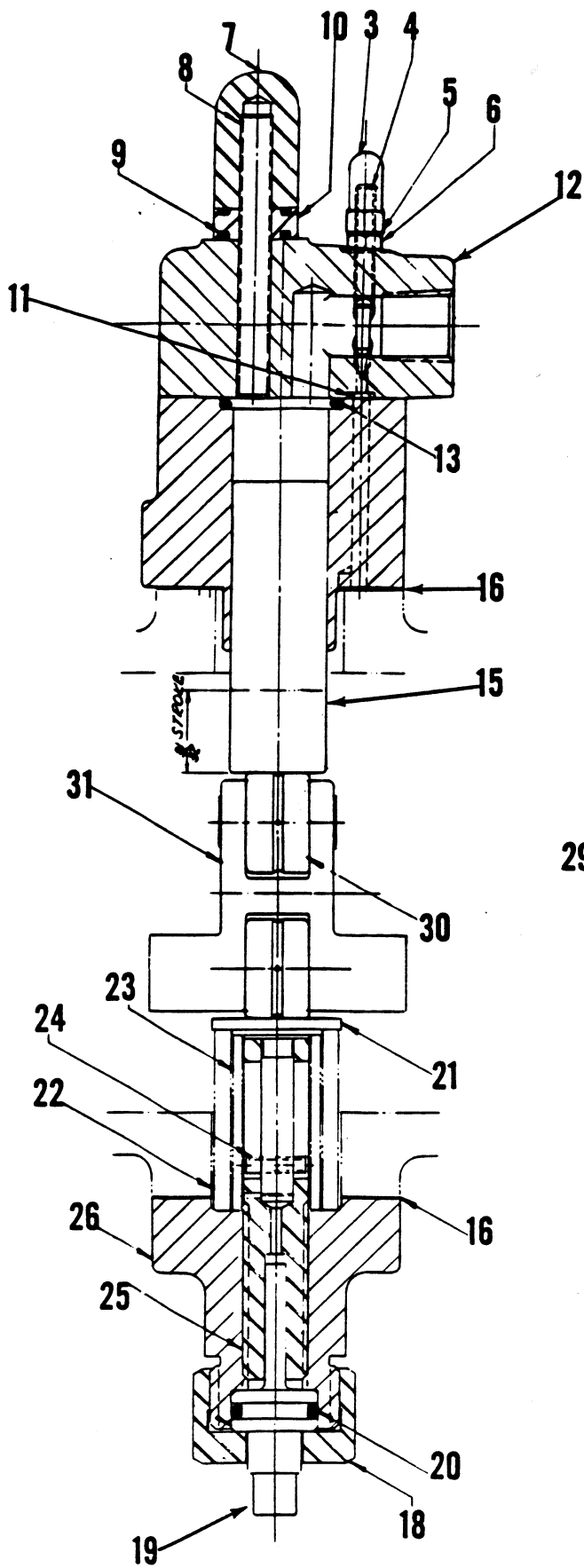
The 600 series pump may be operated at either 1200 rpm or 1800 rpm, while the recommended operating speed for the larger 700 and 800 series is 1200 rpm.

Clockwise rotation is standard with all pumps but counter clockwise rotation may be obtained if requested at time of your order.

All variable volume pumps have a minimum stop adjustment which is located below the hanger



housing. This stop controls the minimum flow of the pump. The adjustment of this control is set at the factory and should not be adjusted unless it is desirable to operate the pump above the minimum volume. This is done by loosening the lock nut and turning the adjustment nut clockwise until the minimum flow desired is reached, then tighten lock nut.



SECTION A-A

PARTS LIST
CYLINDER CONTROL FOR VARIABLE VOLUME PUMPS

REF. NO.	DESCRIPTION	SERIES			QTY.
		"600"	"700"	"800"	
		BILL OF MATERIAL			
		S15-99913	S15-99786	S15-99791	
		PART NO.	PART NO.	PART NO.	
1	S.H.C. Screw 10-24 x 1 1/2 inch	358-10200	358-10200	358-10200	2
2	S.H.C. Screw 7/16-14 x 4	358-18360	-----	-----	4
	S.H.C. Screw 5/8-11 x 5	-----	358-24400	358-24400	4
	Cap assembly (3 thru 12)	S15-00044	S15-00173	S15-00173	1
3	. Acorn nut	035-12081	035-12081	035-12081	1
4	. Needle	035-12085	035-12085	035-12085	1
5	. Copper gasket	035-22727	035-22727	035-22727	2
6	. Hex nut 1/4-28	333-11000	333-11000	333-11000	1
7	. Cap	035-12565	035-12565	035-12565	1
8	. S.S. Screw 3/8-16 x 3 3/8 flat point	311-16332	-----	-----	1
	. S.S. Screw 3/8-16 x 3 3/4 flat point	-----	311-16352	311-16352	1
9	. "O" ring 70-6227-12 (ARP 114)	671-00114	671-00114	671-00114	2
10	. Lock nut	035-12566	035-12566	035-12566	1
11	. "O" ring 70-6227-3 (ARP 008)	671-00008	671-00008	671-00008	1
12	. Control cap	035-15384	035-15385	035-15385	1
13	"O" ring 70-6227-22 (ARP 217)	671-00217	-----	-----	1
	"O" ring 70-6230-3 (ARP 225)	-----	671-00225	671-00225	1
14	Housing assembly	S15-02501	S15-02247	S15-02247	1
15	Piston	035-14190	035-14082	035-14082	1
16	Gasket	035-12592	035-12279	035-12279	2
17	S.H.C. Screw 7/16-14 x 1	358-18160	-----	-----	4
	S.H.C. Screw 5/8-11 x 1	-----	358-24160	358-24160	4
	Minimum stop assembly (18 thru 26)	S15-00050	S15-00163	S15-00163	1
18	. Nut	035-14716	035-14752	035-14752	1
19	. Tongue	035-14718	035-14751	035-14751	1
20	. "O" ring 70-6227-15 (ARP 210)	671-00210	-----	-----	1
	. "O" ring 70-6227-19 (ARP 214)	-----	671-00214	671-00214	1
21	. Stop piston	035-14717	035-15072	035-15072	1
22	. Spring	035-22404	035-22413	035-22413	1
23	. Spring	035-22322	-----	-----	1
24	. Rollpin 3/16 x 11/16	325-12110	-----	-----	1
	. Rollpin 3/16 x 15/16	-----	325-12150	325-12150	1
25	. Stop	035-14719	035-15071	035-15071	1
26	. Stop body	035-14715	035-15070	035-15070	1
27	S.H.C. Screw 5/16-18 x 1 (Nylok)	358-14166	358-14166	358-14166	4
	Clevis assembly (28 thru 31)	S15-00043	S15-00162	S15-00249	1
28	. Dowel pin 5/8 x 1 3/8	324-24022	324-24022	324-24022	1
29	. Dowel pin 5/8 x 3	324-24048	324-24048	324-24048	1
30	. Needle bearing (McGill MO-10-N)	230-10016	230-10016	230-10016	2
31	. Clevis	035-15868	035-15821	035-15824	1

GENERAL SALES OFFICES

CALIFORNIA

San Jose 95118 (408) 723-5486
4340 Almaden Expressway
Suite 140

Orange 92668 (714) 634-9565
1940 W. Oranewood Ave.
Suite 209

GEORGIA

Peachtree City 30269 (404) 487-1399
110 Lakeaires

NORTH CAROLINA

Charlotte 28212 (704) 545-8390
4400 Morris Park Dr.
Suite M

OHIO

Columbus 43216 (614) 481-7300
1220 Dublin Road

PENNSYLVANIA

Allentown 18104 (215) 395-4050
1483 Cedarwood Road

TEXAS

Richardson 75081 (214) 690-9600
801 E. Campbell Rd.
Suite 270

WASHINGTON

Seattle 98188 (206) 575-3070
331 Andover Park West

WISCONSIN

Waukesha 53186 (414) 547-9159
West 255 N. 499 Grandview Blvd. N.

CANADA

Hägglunds Denison Canada Inc. (416) 738-0561
Concord, Ontario L4K 2Z3
50 McLeary Ct.

CUSTOMER SERVICE

Service (614) 481-7300

Sales Representatives and Distributors Located in Major Industrial Areas — Look for "Hägglunds Denison Hydraulic Equipment" in the Yellow Pages.

INTERNATIONAL AFFILIATES LOCATED IN — Argentina, Australia, Austria, Belgium, Brazil, Canada, Chile, Colombia, Denmark, Eastern Europe, England, Finland, France, Germany, Greece, Hong Kong, Holland, Italy, Japan, Mexico, New Zealand, Norway, Peru, Singapore, South Africa, Spain, Sweden, Switzerland, Venezuela.



HÄGGLUNDS DENISON CORP., 1220 Dublin Road, Columbus, Ohio U.S.A. 43216
Call 1-800-982-0030 for the distributor nearest you