

Service Data

Vickers®

Piston Pumps



Variable Inline Piston Pump

PVB90-(F)*DF-2*-D(A)-1*

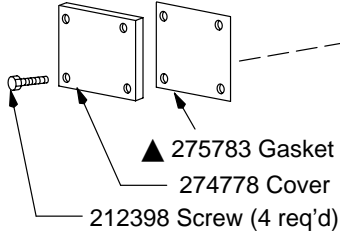


Revised 10-01-85

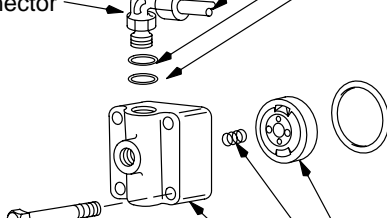
I-3289-S

Vane Pump and Tubing Parts for -DA Model only

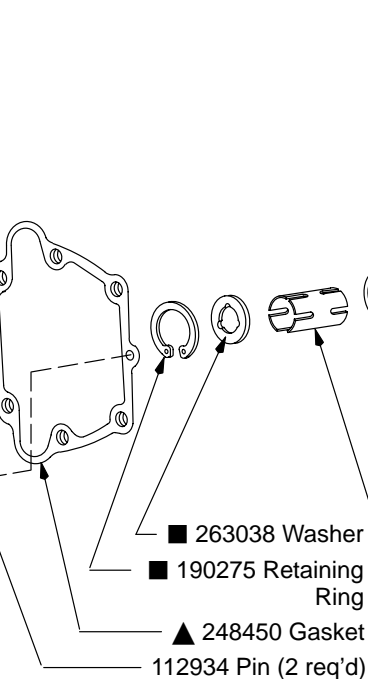
278494 Spool
 1276 Screw (4 req'd) (Torque to 25-35 lb. ft.)
 278494 Spool must slide without binding after tightening screws.



230661 Retaining Ring
 ▲ 154129 "O" Ring
 292394 Tube
 238281 Elbow Connector



186580 Plug
 ▲ 154129 "O" Ring
 170072 Spring
 1319 Screw (4 req'd) (Torque to 65-75 lb. ft.)



| Relief Valve S/A | Model |
|------------------|----------|
| 284220 | 20-DA-10 |
| 232795 | 21-DA-11 |

Install as shown.

■ 325652 Shoe Plate
 ■ 248444 Washer
 ■ 261437 Washer
 ■ 248861 Pin (4 req'd)
 ■ 325650 Cylinder Block
 ■ 248567 Washer
 ■ 249901 Spring
 ■ 263039 Lift Limiter Sleeve (Machine sleeve (non-chamfered end) length to provide .005 to .008 inch clearance (see back page) between cylinder block and housing face without 249901 spring installed. Chamfer I.D. of machined end .030 inch x 45 degree.)

■ 942084 Piston S/A Kit (Includes 9 Piston & Shoe S/A)
 ■ 287180 Swash Plate
 298172 Screw (2 req'd) (Torque to 190-210 lb. ft.)
 376892 Yoke S/A (Model -20-10)
 381299 Yoke S/A (Model -21-11)

▲ Included in 919486 Gasket Kit

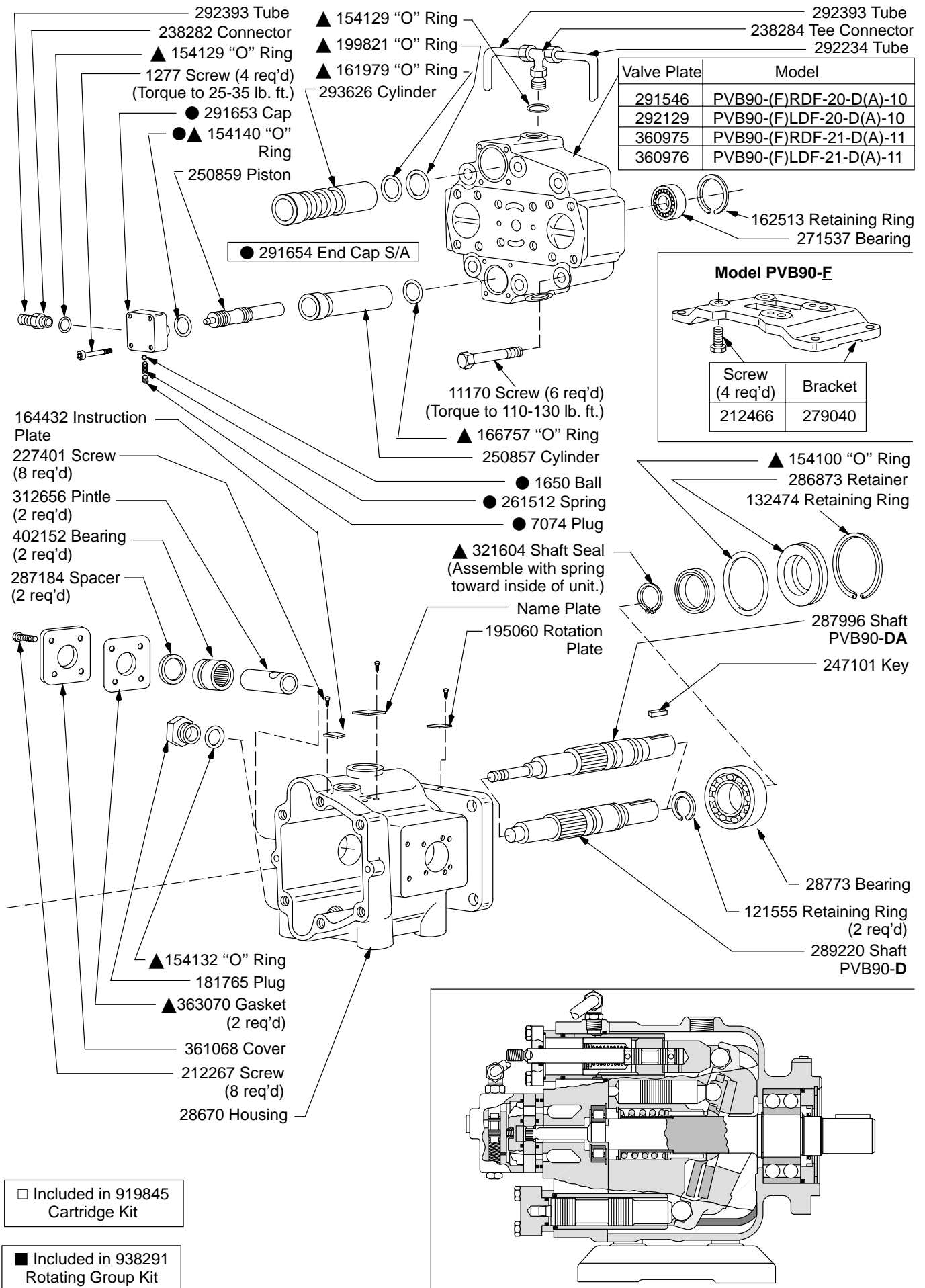
165265 Snap Ring
 295282 Washer
 193727 Ring
 278434 Spring
 293625 Piston

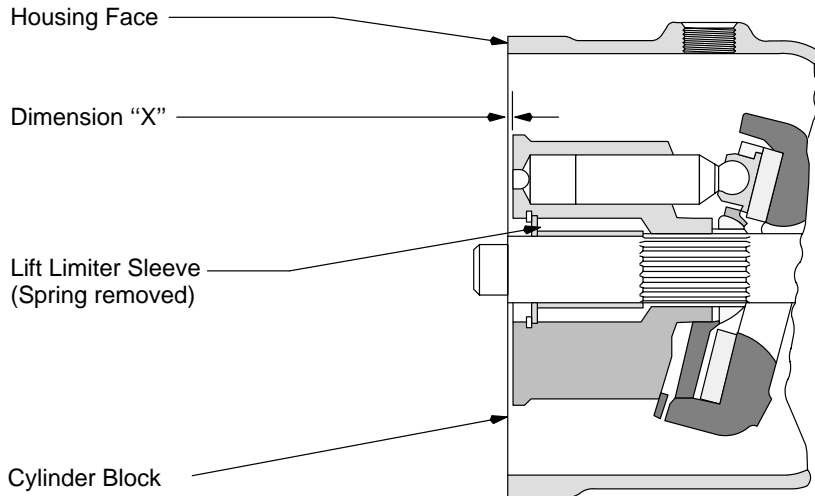
▲ 199820 "O" Ring
 ▲ 154013 "O" Ring
 278497 Cap (Model -20-10)
 359620 Cap (Model -21-11)

□ 15880 Pin (2 req'd)
 □ 912031 Vane Kit
 □ 172302 Rotor
 □ 114154 Ring

□ 154090 "O" Ring (3 req'd)
 □ 251111 Plate

1228 Screw (4 req'd) (Torque to 130-150 lb. in.)
 287183 Plate (2 req'd)
 ■ 287285 Shim (2 places as req'd) (To obtain a clearance of .002 to .006 inch between 32562 Shoe Plate and 287183 Plates.)





MODEL CODE BREAKDOWN

PVB 90 - (F) * D F - 2* - D (A) - 1*

1 Model

Variable displacement pump, inline type

2 Flow rating @ 1800 rpm

90 - 90 USgpm

3 Mounting

F - Foot bracket (Omit for flange mount)

4 Rotation

Viewing from shaft end
 L - Left hand
 R - Right hand

5 Swash Plate Movement

D - Both sides of center

6 Port Options

F - Flanged port - SAE 4 bolt

7 Pump Design

8 Control Type

D - Control stem servo

9 Additional Options

A - Integral control pump (Omit when not included.)

10 Control Design Number

For satisfactory service life of these components, use full flow filtration to provide fluid which meets ISO cleanliness code 16/13 or cleaner. Selections from pressure, return, and in-line filter series are recommended.