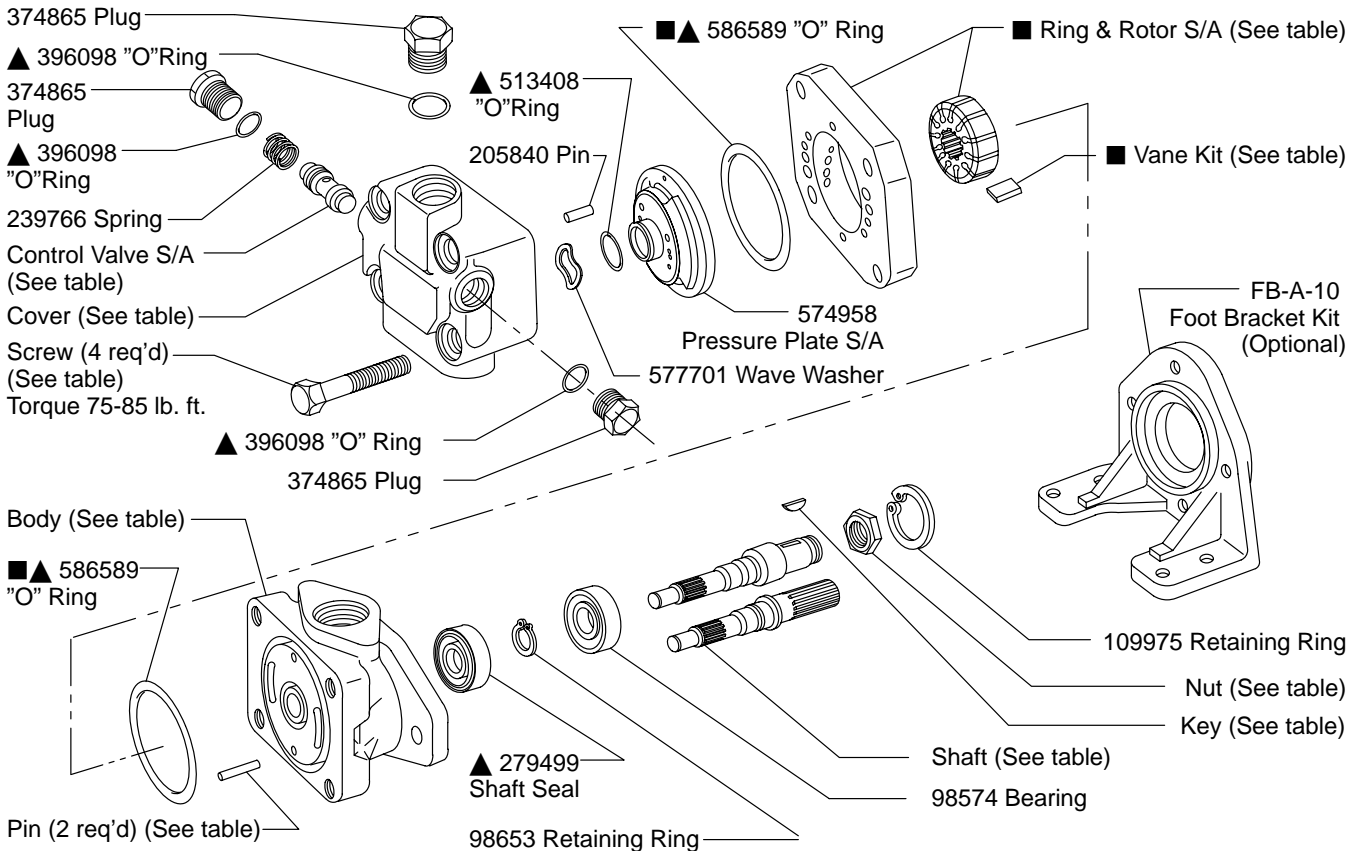


# Vane Pumps



## Vane Pump

V20NF-\*\*\*T-\*\*\*-22



- ▲ - Included in Seal Kit 920371
- - Included in Cartridge Kit

Model	Body
V20NF-1D	583170
V20NF-4D	583172
V20NF-1F	297228
V20NF-1P	280689
V20NF-4P	308628
V20NF-1S	294266

Model	Cover
V20NF-***T-***2-22	452272
V20NF-***T-***3-22	452240
V20NF-***T-***4-22	452242
V20NF-***T-***5-22	452069
V20NF-***T-***6-22	452244
V20NF-***T-***7-22	574959
V20NF-***T-***8-22	452071
V20NF-***T-***9-22	478133
V20NF-***T-***10-22	452274

Model	Control Valve S/A
V20NF-***T-***C-22	232794
V20NF-***T-***D-22	232795
V20NF-***T-***E-22	232796
V20NF-***T-***F-22	232797
V20NF-***T-***G-22	232798
V20NF-***T-***H-22	232799
V20NF-***T-***J-22	233019
V20NF-***T-***K-22	233020
V20NF-***T-***L-22	266200

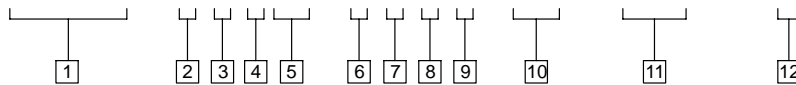
Model	Pin	Screw	■ Vane Kit	■ Ring & Rotor S/A	Cartridge Kit
V20NF-***5T	2161	11165	923651	503157	923656
V20NF-***6T				452235	923657
V20NF-***7T				452261	923658
V20NF-***8T	2478	9431	923652	574954	923659
V20NF-***9T				452264	923660
V20NF-***10T	16662	96168	923653	452267	923661
V20NF-***11T				574945	923662
V20NF-***12T				452270	923663
V20NF-***13T	9603	96168	923654	452245	923664

Model	Shaft	Key	Nut
V20NF-***T-1	280372	5881	—
V20NF-***T-3	280504	1615	132260
V20NF-***T-6	297330	1609	—
V20NF-***T-10	324043	1609	—
V20NF-***T-11	280515	—	—
V20NF-***T-38	328096	—	—
V20NF-***T-101	478142	5881	—
V20NF-***T-103	478136	1615	132260
V20NF-***T-138	478122	—	—
V20NF-***T-203	502682	1615	132260
V20NF-***T-238	502235	—	—



# Model Code

**V20NF - \* \* \* T - \* \* \* \* - 22 - ( \* \* \* ) - (L)**



**1 Model Series**

**V20NF** - Vane pump, 20 size with flow control valve cover & internal drain

**2 Pump Mounting**

- 1 - 2 Bolt
- 2 - Foot mount - body inlet port @ 12 o'clock (viewed from shaft end)
- 3 - Power take-off
- 4 - Face
- 23 - Body inlet port @ 3 o'clock
- 26 - Body inlet port @ 6 o'clock
- 29 - Body inlet port @ 9 o'clock

**3 Inlet Body Port**

- D - 1.312-12 (SAE straight thread)
- F - 2 bolt flange
- P - 1.25 N.P.T.
- S - 1.625-12 (straight thread)

**4 Ring Capacity @ 1200 RPM**

- 5 - 5 GPM    8 - 8 GPM    11- 11 GPM
- 6 - 6 GPM    9 - 9 GPM    12- 12 GPM
- 7 - 7 GPM    10 -10 GPM    13- 13 GPM

**5 Flow Control Cover**

(Pressure port - .750-16 straight thread)

**6 Shaft Extention Type**

- For 10-13 GPM units:
- 1 - Straight keyed (standard)
  - 3 - Threaded
  - 6 - Straight Stub
  - 10 - Threaded Straight Stub
  - 11 - Splined
  - 38 - Splined

- For 7-9 GPM units:
- 101 - Straight keyed (standard)
  - 103 - Threaded
  - 138 - Splined

- For 5-6 GPM units:
- 203 - Threaded
  - 238 - Splined

**7 Outlet pressure port position**  
(Viewed from cover end)

- A - Opposite inlet port
- B - 90° CCW from inlet port
- C - In line with inlet port
- D - 90° CW from inlet port

**8 Flow Rate thru Orifice in Cover**

- 2 - 2 GPM            7 - 7 GPM
- 3 - 3 GPM            8 - 8 GPM
- 4 - 4 GPM            9 - 9 GPM
- 5 - 5 GPM            10 - 10 GPM
- 6 - 6 GPM

**9 Control Valve Pressure Setting**

- C - 750 PSI        H -2000 PSI
- D - 1000 PSI     J -2250 PSI
- E - 1250 PSI     K -2500 PSI
- F - 1500 PSI     L -2750 PSI
- G - 1750 PSI

**10 Design**

**11 Special Suffix Feature**

(Omit if not required.)

**12 Left Hand Rotation**

(Viewed from shaft end)

(Omit for right hand rotation.)

For satisfactory service life of these components, use full flow filtration to provide fluid which meets ISO cleanliness code 18/15 or cleaner. Selections from Eaton OFF, OFR and OFRS filter series are recommended.